

Prospectus

NWFP Medical/Dental Colleges

Session 2009 – 2010



DEPARTMENT OF HEALTH
GOVT. OF N.W.F.P.



CONTENTS

	Page No.
1. Introduction to Medical/ Dental Colleges	6
2. Admission Policy	18
i. Important Notes	18
ii. Seats distribution	19
iii. Eligibility for seats	21
iv. Qualifications and other criteria for admission	26
v. Documents Required with application form	28
vi. Selection and Admission	29
vii. Tuition fee structure	31
3. College Administration	33
4. Academics	34
i. Courses of Studies	36
ii. Examinations	37
5. Syllabi	37
6. Eligibility and Rules for Examination	39
7. BDS Examination	44
8. Fees, Subscriptions & Scholarships	45
9. Rules Regarding Payment of Fees for MBBS/BDS Students	50
10. Rules and Regulations for students at college	52
11. Hostel Rules and Regulations	56
12. Undertaking	61
13. Disability Certificate (specimen)	66
14. Certificate of Location of Educational Institutes (specimen)	67



**INTRODUCTION
TO THE
MEDICAL/DENTAL
COLLEGES
N.W.F.P.**

KHYBER MEDICAL COLLEGE, PESHAWAR



Khyber Medical College, which is situated at the doorstep of historical Khyber Pass, was established in 1954. The College started functioning in 1955 with enrolment of fifty students with meager facilities.

Ever since the college has undergone tremendous development and has become an excellent seat of learning and motivation, recognized all over the world.

Khyber Medical College is a pioneer institution in NWFP in medical education and has been rightly called the mother Institution of all the Medical/ Dental Institutions established in NWFP. It has created name for itself at national and international level by dedicated work of its staff and students.

The graduates of Khyber Medical College, numbering over 9000, are providing health care, not only in NWFP and FATA, but also in rest of the country. In addition, its graduates are holding key positions both at home and abroad.

Beside undergraduate medical education, the college offers teaching and research facilities to the postgraduate students, i.e., M. Phil, in all basic Medical Sciences, FCPS in Clinical as well as basic medical sciences, and minor diplomas in many specialties.

The college is affiliated with Khyber Medical University and is recognized by PMDC, General Medical Council of UK, Ireland and licensing authority of USA.

Khyber Teaching Hospital, established in 1976, is attached to the college for teaching/ training purposes. It is a 1200-bedded hospital, which maintains



high standards with highly qualified medical staff and sophisticated equipments.

Adjacent to the college are Khyber College of Dentistry and Institute of Radiotherapy and Nuclear Medicine (IRNUM), providing training facilities to the students of Khyber Medical College in these disciplines.

The Pakistan Medical Research Council (PMRC) has established a research center within the college premises. It is a well-equipped center where research facilities are provided in all disciplines of medical sciences.

The college has a well-established Medical Education Department where courses on various subjects are organized periodically. In addition, workshops, symposia and seminars are organized by the Department for the faculty members and students.

An I.T based 'Self Learning Resource Center' has been setup within the

college which is equipped with latest computers that provides internet facility to the staff and students thus facilitating self study and research. A wireless network system has been established in the college and wireless bridging between the college, hospital and student hostels has been completed. The network system is connected to the digital library of Higher Education Commission.

A scientific journal is a symbol of recognition of academic activities and research conducted in an institution. KMC has been regularly publishing its own scientific journal known as "Journal of Medical Sciences". The research articles are mostly contributed by the faculty of KMC.

The college has well-established library consisting of three portions, i.e., a lending part for students, a reference part for teachers and a part containing periodicals. The library is well furnished, air-conditioned and offers large collections of books and periodicals to meet the teachers and students requirements.

Separate hostels for boys and girls are situated within the premises of Peshawar University.

The students of KMC over the years distinguished their Alma Mater not only by extending selfless services to ailing humanity with devotion and dedication, acquiring higher and specialized knowledge in various disciplines of medicine, but also by actively participating in co-curricular and extracurricular activities. The Social Welfare Society is the youth

wing of Pakistan Red Crescent Society. Based on its outstanding performance and impressive activities in the service to the ailing humanity, the society has been receiving champion's trophy and has been rated as the best youth wing of Pakistan Red Crescent Society NWFP for the last 22 years in a row. The literary society of the college is indeed playing a vital role in projecting the real talents of the Khyberians. Our college magazine 'CENNA' is considered an epitome of excellence in the literary circles of the

country. In addition, the college has a sports society, a debating club etc.

The present Principal of the College is Professor **Dr. Nargis Parveen**, M.B;B.S, M.Phil.

PABX: (+92-91) 9216206-10

Principal: (+92-91) 9216212

Fax: (+92-91) 9216213

Email:- principal@kmc.edu.pk

Website: <http://www.kmc.edu.pk>

AYUB MEDICAL COLLEGE, ABBOTTABAD



Abbottabad is situated at an altitude of 1,225 m. (4002 ft.) and is surrounded by refreshing green hills of Sarban, one of the best-known hill resorts of Pakistan. It is situated on the Karakorum Highway, the Silk Route to China, 120 Km from Rawalpindi/Islamabad. The climate is temperate with 4 distinct seasons, spring, summer, autumn and winter. The summer is pleasant while the winter is cool with occasional snowfall. The city is non-industrial, situated in the lush green Orash Valley and is fairly free from environmental pollution. It has a population of over 300,000.



In 1978, the Government of NWFP sanctioned establishment of Ayub Medical College, named after Late Field Marshal Muhammad Ayub Khan. The 1st academic year started on 15th May, 1979 with enrolment of 100 students. It was first established in a building provisionally acquired from the Education Department, and then moved to its present scenic location on Karakorum Highway on 30th December 1990. The College building is one of the most beautiful of all medical colleges of the country.

Since 1979 to date the College has undergone tremendous development. At present the Medical College comprises of modern buildings, 1,000 bedded Teaching Hospital, a School of Nursing, a Paramedical School, hostels, play grounds and other supporting amenities for the students and staff. The college has spacious lecture halls with most sophisticated audiovisual teaching aids, well-equipped laboratories, museums and a vast, centrally air-conditioned library having Text Books, Reference Books, CD's and Taps, Medical Journals, a 'Self-Learning Resource

Centre' and a Computer Library with access to Internet.

More than 3000 doctors have graduated from Ayub Medical College so far who are holding high positions not only in the country but abroad as well, including UK and USA.

The college is affiliated to University of Peshawar and Khyber Medical University, Peshawar. It is recognized by the PMDC, General Medical Council of UK, WHO and many reputed Medical Councils of the world. The College of Physicians & Surgeons of Pakistan has recognized many of its Departments for postgraduate training. The Royal College of Obstetricians & Gynaecologists of UK has granted recognition to the Department of Obstetrics and Gynaecology for the clinical training of the MRCOG candidates.

With commissioning of INOR (Institute of Nuclear Medicine, Oncology and Radiotherapy) at the campus, Ayub Medical College has joined nuclear

medicine club where most modern techniques for diagnostic and radiation therapy are available.

The College has been publishing its Journal, 'Journal of Ayub Medical College (JAMC)' since January 1988. It is a peer reviewed journal and has gained its place as a standard medical journal, recognized by the PMDC and registered with International Serial Data System of France, Indexed Medicus of WHO (EMRO). JAMC is one of the few medical journals of Pakistan, available free online with full text and illustrations.

'Karakoram', the students' magazine of Ayub Medical College has always kept its standard and is known as a balanced magazine edited, formatted, printed and published by the students themselves. The magazine is published in English, Urdu, Hindko and Pushto languages and contains write-ups from staff and students apart from scientific articles by the students.

Hostels for boys and girls are lo-

cated at the campus, adjacent to college building. Four hostels for boys and one for girls are available besides, hostels for MO's, House Officers, Paramedics and Nurses. Full-time Resident Wardens, Deputy Provosts and Provosts, separate for Boys' and Girls' hostel, manage the hostels.

**DENTAL SECTION OF AYUB
MEDICAL COLLEGE**

In order to provide Dental Education and better health facilities to the people of this region, a Dental Section has been established in Ayub Medical College during 1998-99. The Government has decided to complete the es-

tablishment of Dentistry Department in three phases. Two phases have been successfully completed whereas the work on Phase-III is in progress. The Section is making all efforts to provide improved facilities of Dental and Maxillofacial Surgery besides training and teaching to BDS students for Degree of Bachelor of Dental Surgery from Khyber Medical University. The Department of Oral & Maxillofacial Surgery is recognised by the CPSP for FCPS training.

The Department has sufficient space, latest equipments, Laboratories, Lecture Rooms and a Library. There is

qualified and experienced staff appointed for teaching and training the BDS students and also provides better dental treatment to the patients of this area.

Present Principal of the College is
Prof. Dr. Jaffar Khan, M.B;B.S, M.S
(Ophthalmology)

Tele: (+92-992) 382349

Fax: (+92-992) 382321

Principal: (+92-992) 382221

Information: (+92-992) 381129

Email: principal@ayubmed.edu.pk

Website: <http://www.ayubmed.edu.pk>

KHYBER COLLEGE OF DENTISTRY, PESHAWAR



In order to provide dental health facilities to the people of this region, it was considered necessary to set up a teaching dental department at Khyber Medical College, Peshawar. The idea to start a dental department came from late Dr. Hassan Raza Shah, the then Principal of de'Montmorency College of Dentistry, Lahore. It was gladly accepted; appreciated and very much encouraged by General Mohammad Akram, the then Principal of Khyber Medical College and Mr. Mohammad Ali, the then Vice Chancellor of the University of Peshawar. The Department of Dentistry was formally declared open by the then Minister for Health Begum Mahmuda Salim on 12th October 1964.

The first batch graduated in 1968 while Pakistan Medical & Dental Council accorded permanent recognition of BDS degree in its session held in Dacca (Bangladesh), the Capital of the then East Pakistan in November, 1968.

From the modest start, it has grown to become a fully developed teaching institute with its modern Oral & Dental Hospital and Surgeries, Operation theatres and Wards in its new building complex, which was opened on 9th September, 1978.

The annual intake of students has gone up gradually from 14 in 1964 to 77. So far more than 600 dental graduates have qualified from this institute. Nearly 300 patients receive daily dental treatment of various nature. This includes highly specialized treatment modalities like orthodontics appliances, treatment for oro-facial pain, facial injuries, oral cancer and fixed and removable prostheses of various kinds.

On 11th January 1990, the Department of Dentistry was upgraded to the



status of the College by the then Chief Minister, Mr. Aftab Ahmad Khan Sherpao who made this announcement while presiding over the inaugural function of the Silver Jubilee of the Department of Dentistry.

Three new blocks housing the Department of Orthodontia, Prosthetic and Conservation were added to the present set-up in 1992. The Basic Science Block was added in year 2000. The new Department of Oral & Maxillofacial Surgery, R&D Department, Pathology Lab, library and cafeteria will start functioning from this year. Major repair/renovation and installation of new equipment has given a new look to Khyber College of Dentistry.

The College is recognized by College of Physician and Surgeons of Pakistan (CPSP) for FCPS Part II training in the specialties of Oral & Maxillofacial Surgery and Prosthodontics. The college is also recognized by CPSP for training of MCPS in Oral & Maxillofacial Surgery, Prosthodontics, Periodontology, Operative Dentistry, Orthodontics and Family

Dentistry. In addition, Khyber Medical University has approved various diploma courses in the specialties of Periodontology, Operative Dentistry, Orthodontics and Paedodontics.

Khyber College of Dentistry is located within the University Campus and adjacent to Khyber Medical College, Khyber Teaching Hospital and the Administration Block of the Peshawar University. The shopping centre, telegraph and post office are situated very close. Within the large green campus vans of the University provide transport faculty regularly whereas the private transport is also available from early morning till late in the night for travel between the College and Peshawar City. The College is amazingly close to World famous Khyber Pass and the most beautiful scenery in the hilly areas and valleys.

Present Dean/Principal is **Prof. Dr. Qiam ud Din**, BDS (Pesh), M.Sc (London)

Contact details are:
Tele: (+92-91) 9216217
Fax: (+92-91) 9216217

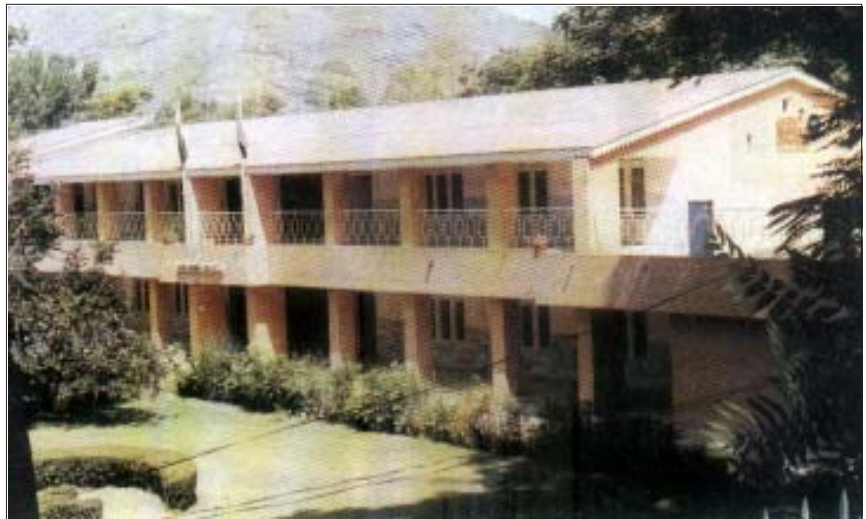
SAIDU MEDICAL COLLEGE, SWAT



Swat, the former state, was given the status of a District in 1970. This District holds a central position in the northern belt of the Province, and has significance as an area of anthropological interests in the history of South East Asia. Swat has been extremely attractive place for tourism and it is aptly known as the Switzerland of Pakistan.

Saidu Sharif, the former capital of Swat state, is the District Headquarter while adjoining Mingora is a commercial centre. The present Swat owes its grandeur and developments to the inputs by BADSHAH SAHIB AND WALI OF SWAT. The population of Swat District is approximately 1.7 million.

Since the historical announcement in October 1998 of the establishment of Saidu Medical College, on the floor of the Provincial Assembly, Saidu Medical College started functioning with enrolment of 50 students. The classes started on 28th of December 1998 in the Holy month of Ramzan. The College is housed in the old Paramedic School & Hostel, which have been completely overhauled, renovated and furnished. Hostel facilities for both male and female students are available. Peshawar University affiliation committee visited the college on 08th October 1999 and Saidu Medical College; Swat was approved for affiliation with the



Peshawar University. The college is presently affiliated with the Khyber Medical University.

Pakistan Medical & Dental Council has given recognition to the college. The college has excellent professorial staff in pre-clinical and clinical departments.

Many graduates of Saidu Medical College have passed FCPS in various specialties and are working all over Pakistan and abroad. The name of Saidu Medical College has been included in the WHO list of international Medical Colleges and the degree has been recognized in USA and UK

Saidu Group of Teaching Hospitals is attached to Saidu Medical College, Swat with 500 beds for all the specialties.

Saidu Medical College, Swat is being maintained by the Govt. of NWFP and is under the administrative control of Health Department.

Present Principal is **Professor Dr. Taj Muhammad**, MBBS, M.Phil

Tele: (+92-946) 9240134

Fax: (+92-946) 9240135

Exchange: (+92-946) 9240131-32

Email:- smcadmn@yahoo.com

GOMAL MEDICAL COLLEGE, D.I. KHAN



D.I.Khan is a historic city. It is situated in the Southern region of North West Frontier Province. It is about 300Km from Peshawar and is linked to it through Kohat and Bannu Districts. It is located on the main Indus High Way. Air services to major cities of the country are also available.

Though economically underdeveloped, this seven centuries old city is rich in socio cultural heritage, the archaeological antiques and the remnants of the glorious past. Among others, Rehman Darri, an archaeological site dating back to 3500 BC, is situated 14 Km north of the city. Historic Suleman Plateau and Kohe Suleman border its west while Indus River flows in the East. Geography has influenced its economy and hence the way and standard of living of its people. The people are endowed with qualities of intelligence, generosity, courage, bravery, simplicity and sincerity. They are peace loving. There is a substantial contribution of these people in the freedom movement of Pakistan. Since D.I.Khan division has borders with Bannu Division, South Waziristan, Southern Punjab and Balochistan, the college is playing a major role in providing health services to the people of these areas.



The Chief Minister of NWFP announced Gomal Medical College for DI KHAN in a session of Provincial Assembly on 26th August 1998.

The College was temporarily established in a portion of Central Library of Gomal University. Fifty seats were sanctioned for the session 1989-1999 and the college started on 11th January 1999. Presently, it is located on North circular Road with enough space and laboratories. Future building of the college is under construction near Mufti Mahmood Memorial Hospital for which Govt. of NWFP has allotted 300-canals of land. Gomal Medical College has two Teach-

ing Hospitals i.e DHQ Hospital and Maulana Mufti Mehmud Memorial hospital. The college has been regularly publishing its scientific journal "Gomal Journal of Medical Sciences" since April 2003, recognized by Pakistan Medical and Dental Council of Pakistan and a student's magazine HAYYAN regularly.

Present Principal is **Prof. Dr. Abdul Mateen**, M.B;B.S (Pesh), M.Phil (Pb)

Phone: (+92-966) 9280341

Exchange: (+92-966) 9280338-9

Fax: (+92-966) 9280340

Gims786@hotmail.com

Web.www.gmc.edu.pk

KHYBER GIRLS MEDICAL COLLEGE, PESHAWAR



There was a dire need in NWFP to have a medical college for girls. Such a facility already exists in Punjab in the name of Fatima Jinnah Medical College Lahore and in Sindh in the name of People's Medical College Nawabshah where only female students are admitted.

The Government of N.W.F.P took a policy decision in this regard and in August 2003 the Provincial Cabinet approved the establishment of a separate Girls Campus of Khyber Medical College located at Hayatabad with an object to upgrade the same to an independent Girls Medical College in due course of time. The Girls Campus of K.M.C started functioning in PDA Block-IV, Phase-V Hayatabad and admitted First Batch of 50 students during the Academic Session 2004-05.

The Chief Minister N.W.F.P during the inauguration ceremony of Girls

Campus, KMC on 13th May 2006 announced the upgradation of Girls Campus KMC to an independent college "Khyber Girls Medical College" w.e.f 8th December 2005. Hayatabad Medical Complex is its teaching hospital. At present the Khyber Girls Medical College has its own faculty (Basic/clinical).

All the basic sciences departments of Khyber Girls Medical College have well established/well equipped Laboratories, Lecture Theatres, Dissection Hall, Anatomy Museum, an Self Learning Resource Center and two Libraries one for the staff and the other for the students with sufficient number of latest editions of Text Books, Reference Books, and Journals.

The Govt. of NWFP has allotted 30 kanals of land adjacent to the college building for the construction of two hostels for the students, lecture theatres, examination hall and auditorium etc.

Pakistan Medical & Dental Council (PM&DC) and College of Physicians and Surgeons Pakistan (CPSP) have already recognized the Khyber Girls Medical College.

This institution has admitted 5th Batch of 50 students of First Year MBBS Class during the Academic Session 2008-09.

Professor Dr. Muhammad Zubair Khan, FRCP(UK), MPH is the Principal of Khyber Girls Medical College Peshawar.

PABX (+92-91) 9217684-94

Principal (+92-91) 9217701

Fax: (+92-91) 9217702

Email: mzubairr@yahoo.com

BANNU MEDICAL COLLEGE, BANNU



The name of Bannu is derived from "Bano" who was the wife of Shah Farid Ilyas (Sheetak), the founder of present day Bannu and the Banochi Tribe which came from Shawal. Bannu is a thickly populated District located in the heart of southern region of N.W.F.P with its boundaries touching the Districts of Karak, Lakki Marwat, and the North & the South Waziristan Agencies. Besides this, it also has a huge Afghan population. The people of Bannu are faced with the dearth of health facilities. The establishment of a Medical College in Bannu will play major role in the improvement of Health Services in this area.



The Chief Minister of N.W.F.P, Mr. Akram Khan Durrani announced the establishment of Bannu Medical College Bannu and the Health Department issued a notification on 31st August, 2006. Bannu Medical College Bannu is temporarily based in the current building having enough infrastructure and a covered area of over 60000 Sq. feet. In the recent inspection, the P.M.D.C team made the following observations.

The building is impressive and fulfill all the basic requirements of students and faculty members the current building has been transformed excellently into a purpose serving building to host the basic Department of the college.

The permanent set up having a purpose built building will be located in Bannu Township in an area of 600 kanal of land and the construction of new building is in process.

The 600 bedded Khalifa Gul Nawaz Hospital, DHQ Hospital and Zanana Hospital are the Teaching Hospital of Bannu Medical College.

It also has the facility of SLRC with a space available for over 30 computers and also a capacious digital library for the students and staff about which the PMDC has remarked as under:

There college has an excellent SLRC center developed in the library. Their existed the facility of digital library with state of the art software installed.

The college is already affiliated with the University of Science and Technology Bannu.

It also has an examination hall for 200 students.

It has a separate medical education department to arrange for conferences, seminars, workshops and also help in the integrated teaching and objectively students learning programme in accordance with the modern trends.

It has good audiovisual department and also a committee room having a space for 25 staff members.

The college has the following hostels:

1. CENNA HALL FOR girls, catering for 60 female students.
2. TOCHI HALL for boys, catering for 40 students.
3. KURRAM HALL for Boys, Catering for 30 students.

The hostels are located in the nearby DHQ Hospital with full security arrangements. We soon are going to renovate doctors Hospital in DHQ teaching Hospital for the students for Bannu Medical College, which will accommodate 80 students and we also shall be renting two more hostels.

There are three buses and one coaster for students and a hiace for staff.

The Present Principal of the college is **Prof. Dr. Shafi Ullah**, MBBS, M.Phil (Pathology).

Telephone No. (+92-928) 620858-9

Personal No. (+92-928) 620856

BACHA KHAN MEDICAL COLLEGE, MARDAN



Mardan (The Land of Hospitality) is a city and headquarters of Mardan District in the North West Frontier Province of Pakistan. The Second major city of North West Frontier Province, which is located at 34° 12'ON 72°1'60E with an altitude of 283 meters (931 feet) lying in south west of the district.

It was part of the ancient Gandhara Civilization. Most of its land is agricultural. It has one of the world's best irrigation system, which was laid down by the British Government during British Rule (1857-1947). There are still remains of the Gandhara Civilization, scattered in different areas of Mardan.

Bacha Khan Medical College is one of the Public Sector Medical Colleges of North West Frontier Province at Mardan. It has been named after the great freedom fighter of the soil, Khan Abdul Ghaffar Khan known as Bacha Khan.

At present Bacha Khan Medical College is located in Mardan Medical Complex. M.M.C has been declared as its Teaching Hospital which is only at a 05 minutes drive from 'Rashakai' interchange of Motorway (M1) on Mardan Nowshera Road.

Mardan Medical Complex is 600 bedded hospital and will serve as Center of Excellence not only for Mardan but also for adjoining districts of Swabi, Charsadda and Nowshera.

1st year MBBS classes will start in session 2009-10. Admission will be along with the other Public Sector Medical Colleges of NWFP.



The No. of seats allocation is as under:

Open merit	30
Self Finance (local)	10
Foreign Self Finance	10

Bacha Khan Medical College will start on the modern lines of teaching. A modern Library and a Self Learning Resource Center will be set up within the college with latest computers and internet facility available to the staff and students. The college will have a medical education department also.

Separate hostels for Boys and Girls are situated within the premises of Mardan medical Complex.. Immediate requirements for establishment of Lecture theatres, Labs, Museum, Dissection Halls and offices at Bacha

Khan Medical College have been arranged while purpose built building is in progress in the vicinity of Mardan Medical Complex, Mardan.

Prof. Dr. Zia-ul-Islam MBBS, FRCS, FRCOph, FCPS is the Project Director / Principal of Bacha Khan Medical College, Mardan.

Contact details are:

Telephone Principal (+92-937) 9230582

PA to Principal: (+92-937) 9230583

Fax: (+92-937) 880388

Email: ziapdbkmc@yahoo.com

Website: www.bkmc.edu.pk



ADMISSION POLICY

ADMISSION POLICY

GENERAL POLICY— IMPORTANT NOTES

1. This prospectus is approved by the Govt. of NWFP and applies to all MBBS and BDS students of all public sector Medical and Dental Colleges of North West Frontier Province.
2. This prospectus is issued for the session 2009-2010. It is applicable to all the candidates applying for admission for the current session and those who are already admitted/studying in the public sector Medical and Dental Colleges in NWFP. All candidates must study the prospectus before applying for admission.
3. The admission Policy contained in the prospectus shall be applicable to all the public sector Medical & Dental Colleges in NWFP.
4. The Medical/Dental colleges of NWFP offer 5-years and 4-years courses leading to MBBS and BDS degrees respectively and are affiliated with Khyber Medical University.
5. Admission to the Medical and Dental Colleges for all Provincial seats will be finalized by the Joint Admission Committee (JAC).
6. All the candidates and students are required to read, know and abide by the rules and regulations mentioned in this prospectus.
7. The fee and subscription given in this prospectus are payable by all the students of Medical & Dental Colleges (except the foreign self fiancé category) from 1st year to Final year classes irrespective of year of admission. This may be subject to adjustment by the Government from time to time corresponding to inflation and cost of education.
8. The principal of college reserves the right to make necessary changes in the syllabi, curricula and examination procedure for MBBS/BDS students as and when notified by Pakistan Medical & Dental Council at any time during the course of studies.
9. The cost of all litigations regarding admission will be borne by the JAC to be paid by all the colleges from the first year litigation fee, while the cost of legal cases of admitted students will be borne by the respective colleges.
 - Litigation allowance @ Rs. 500/- and Rs. 250/- for appearance in the local courts and Rs. 1000/- and Rs. 500/- for appearance in the courts outside district will be provided to the officers and assistants respectively. In addition, the above mentioned officials will be allowed to travel by the college vehicle for the purpose.
10. The public sector Medical/Dental colleges will endeavor to establish provision for scholarships and other support schemes for students of NWFP and FATA to support meritorious, needy and disabled students in meeting the cost of their education.
11. The Joint Admission Committee (JAC) shall exercise its power to decide all cases related to admission and the decision of the JAC shall be binding on the candidates. Review against the decision of the JAC can be filed before the Chairperson JAC within 3 days after the final selection. Aggrieved candidates however, will have the right of appeal to the Government within 7 days, whose decision will be final.

SEATS DISTRIBUTION

The total seats available for admission in each medical/dental college and their allocation against each category is as shown in the following table:

Category of Seats	MBBS KMC	MBBS AMC	MBBS SMC	MBBS GMC	MBBS KGMC	BDS KCD	BDS ADS	MBBS BMC	MBBS BKMC	Total
Provincial:										
Open Merit Seats	183	120	39	40	35	41	18	100	30	606
General self finance	23	20	20	19	9	18	18	20	10	157
Reciprocal for N.M.C.	1	0	0	0	0	0	0	0	0	1
Minorities	1	0	0	0	0	0	0	0	0	1
Disabled Candidates	2	2	0	0	0	1	0	0	0	5
*IDP's Seats	0	0	5	0	0	0	0	0	0	5
NWFP Backward Areas:	0	0	0	0	0	0	0	0	0	0
Kohistan	2	2	0	0	0	0	1	0	0	5
Chitral	2	2	0	0	0	1	1	0	0	6
Dir Upper	1	1	0	1	1	0	0	0	0	4
Dir Lower	1	1	0	0	0	0	0	0	0	2
Gadoon	1	1	0	0	0	0	0	0	0	2
Amazai	0	1	0	0	0	0	0	0	0	1
Gadoon/ Amazi	0	0	0	0	0	1	0	0	0	1
Tribal Area Adjoining Mansehra including Kala Dhaka & Upper Tanawal	1	0	0	0	0	0	1	0	0	2
Kala Dhaka	0	1	0	0	0	0	0	0	0	1
Battagram	1	1	0	0	0	0	0	0	0	2
Bala Kot	0	1	0	0	0	0	0	0	0	1
Allai	0	1	0	0	0	0	0	0	0	1
Shangla	0	1	1	0	0	1	0	0	0	3
Buner	0	1	1	0	0	0	0	0	0	2
Kalam	0	0	1	0	0	0	0	0	0	1
Hangu	2	0	0	0	0	0	0	0	0	2
Tank	0	0	0	2	0	0	1	0	0	3
Federal Seats:	0	0	0	0	0	0	0	0	0	0
FATA	35	28	10	10	5	5	5	25	0	123
Special FATA Seats	4	4	5	5	3	2	1	5	0	29
AJK	1	22	5	5	0	0	1	0	0	34
Northern Areas	1	6	0	0	0	0	0	0	0	7
Foreign Self Finance seats	9	8	3	2	13	5	3	2	10	55
Technical Assistance Program	3	2	0	0	0	1	0	0	0	6
Overseas Pakistanis of NWFP	1	2	0	0	0	0	0	0	0	3
Afghan National seats	2	2	0	0	0	0	0	0	0	4
Bangladesh seats	1	1	1	1	1	1	1	1	0	8
Total	278	231	91	85	67	77	51	153	50	1083

* This facility is only for the current academic session (2009-10).

Prospectus for NWFP Medical/Dental Colleges 2009-2010

SEATS IN FATIMA JINNAH MEDICAL COLLEGE, LAHORE ON PROVINCIAL BASIS*	7
The distribution of these seats will be as under:	
a) Open Merit	5
b) Seats for Backward Areas declared by the NWFP Government	2

* These seats are subject to any changes made by the Government of Punjab.

FATA RESERVED SEATS IN MEDICAL & DENTAL COLLEGES OUTSIDE NWFP

S. No.	Name of the College	MBBS	BDS	TOTAL
1.	Bolan Medical College, Quetta	7	0	7
2.	Fatima Jinnah Medical College Lahore	8	0	8
3.	Chandka Medical College, Larkana	2	0	2
4.	Liaquat University of Medical & Health Sciences, Jamshoro	0	2	2
5.	Punjab Medical College, Faisalabad	1	0	1
6.	Rawalpindi Medical College, Rawalpindi	1	0	1
7.	Alama Iqbal Medical College, Lahore	1	0	1
8.	Nishtar Medical College, Multan	1	1	2
9.	Quaid-e-Azam Medical College, Bahawalpur	1	0	1
10.	King Edward Medical College, Lahore	1	0	1
11.	De' Montmorency Dental College Lahore	0	1	1
	Total	23	4	27

These seats are however, subject to such changes as Federal Government and the concerned Provincial Government may make within their respective competency.

ELIGIBILITY FOR APPLYING AGAINST DIFFERENT CATEGORIES OF SEATS

1. In case the candidate desires to change his/her choice already recorded in admission form, he/she has to submit written application at the time of interview. The choice of candidate at the time of interview and the decision of JAC will be final for all categories of seats.
2. Selection under each category of seats shall be done on the basis of inter se merit amongst the eligible applicants..
3. Description and eligibility for applying under various categories of seats is given under respective headings below. The applicants must study the admission policy carefully and then apply accordingly.

A. NWFP PROVINCIAL SEATS

The candidates seeking admission against NWFP Provincial Seats (Open Merit/Reserved Seats and seats in Fatima Jinnah Medical College, Lahore and reciprocal seat in Nishtar Medical College, Multan) must be *bonafide* nationals of Pakistan with a valid domicile of NWFP.

I. OPEN MERIT SEATS

These Seats are open to applicants possessing valid domicile certificate of NWFP including the backward areas of NWFP.

II. GENERAL SELF FINANCE SEATS.

- a. The NWFP General Self finance seats are open for applicants who are domiciled in NWFP including backward areas and FATA.

III. SEATS IN FJMC LAHORE (FOR GIRLS ONLY)

The candidates who wish to apply against these seats should indicate their preference in appropriate column given in the admission form. The nomination against these seats will be made from amongst the female candidates in the combined Open/ Backward Area merit list on merit cum choice.

IV. NWFP BACKWARD AREAS SEATS

These seats are reserved for the backward areas of NWFP. The backward areas are identified as Upper & Lower Dir, Chitral, Kohistan, Gadoon, Amazai, Tribal areas adjoining Mansehra district including Kala Dhaka and Upper Tanawal, Batagram district including Allai, Shangla, Buner, Kalam, Tank and Hangu and Tehsils Balakot and Kalam. Candidates from these areas can also apply against Open merit seats.

To be considered on open merit as well as quota seats, the candidates must apply against both. However, it will be the choice of the candidate to avail open merit or backward area seat.

Criteria of eligibility for backward areas of NWFP

1. The candidates must be having a valid domicile certificate of the backward area against which he/she is submitting the application.
2.
 - i. The candidates must have obtained education from class-I till F.Sc (complete sessions) including SSC with science and F.Sc premedical from institutes within the concerned backward area of NWFP and have passed examinations from the same institutes provided such facilities exist in the area.
 - ii. Where there are no high schools or colleges available or the facility for teaching science subjects does not exist, the candidate must have obtained their primary and middle education from the respective backward area and must have obtained their SSC (science) and F.Sc (pre-medical) both complete part-I and Part-II within the district of domicile.
 - iii. In case of non existence of school/college or non-availability of the facility for teaching science subjects, the candidate will have to provide a solid proof in the form of a certificate (as per specimen given on page 67) duly verified by the concerned EDO (Education) and countersigned by the concerned DCO of the concerned district.
 - iv. In case of non-availability of candidates fulfilling the above mentioned criteria, the selection will be made on merit from amongst the candidates on the basis of domicile of the concerned backward area.
 - v. The candidates must have qualified the prescribed Entrance Test for admission to Public sector Medical & Dental Colleges in NWFP.

V. Quota seats for disabled candidates:

The disabled candidates selected by the disability committee with a valid domicile of NWFP / FATA and fulfilling all other criteria for admission to NWFP Medical/Dental colleges can apply on these seats.

To be considered on open merit as well as disabled candidates seats, the candidates must apply against both the categories. However, it will be the choice of the candidate to avail open merit or disabled seat.

The disabled candidates are required to provide a registration certificate from the Social Welfare Department Govt. of NWFP, stating that:

- He/She is a disabled candidate, But
- He/She is mentally fit and physically able to carry out his/her studies and can perform professional duties after qualifying M.B.B.S./BDS.

The disabled candidate will be required to produce a certificate from a Govt. certified specialist as per attached proforma in the prospectus

Such certificate will only make him/her eligible to apply against the reserved seats for disabled.

A Medical Board constituted by Chairperson JAC will make final decision about the suitability of the candidate for admission against the reserved seats

Criteria for eligibility:

- a. Disability for the purpose of admission to Medical & dental colleges in NWFP is defined as that degree of physical impairment which puts the candidate at disadvantage as compared to a normal person for acquiring education before entering Medical/Dental College, but otherwise is capable of performing his/her duties satisfactorily as a Medical/Dental student and later on as Medical/Dental Practitioner. The terms "severely disabled and comparison of disabilities" are not applicable because:-
 - i. A severely disable person is ineligible.
 - ii. Disease/ disabilities affecting different organ systems are in no way comparable.
- b. The disability shall be of permanent nature.
- c. The candidate shall be declared disabled by the Medical Board for disabled candidates.
- d. The Medical Board will issue a certificate of disability.
- e. In case of any dispute regarding the decision of Medical Board, an appeal should be made within 48 hours before the Appellate Medical Board. The decision of the Appellate Medical Board shall be final.
- f. Selection against these seats will be done by JAC on merit from amongst the certified disabled candidates.

Medical Board to examine the disabled candidates

1. Medical Specialist
2. Surgical Specialist
3. ENT Specialist
4. Eye Specialist
5. Orthopedic Specialist.
6. Psychiatrist
7. The Chairman JAC may co-opt any other specialist relevant to the disability as member, on need basis.

APPELLATE MEDICAL BOARD FOR DISABLED CANDIDATES

In case of any dispute regarding disability, an appeal should be made within 48 hours to the Appellate Medical Board. The Appellate Board will comprise of the serving / retired Professors of all the concerned specialities and will be constituted by the Chairperson Joint Admission Committee. The decision of the appellate Medical Board shall be final, after approval of Chairperson Joint Admission Committee.

Reciprocal Seat:

Nomination against this seat will be made by the JAC from amongst the candidates of the open merit list on merit cum choice.

Minorities Seat:

Minority candidates can apply against this seat if they are fulfilling the other criteria for admission in NWFP Public sector Medical/ Dental colleges.

Admission against this seat will be made by the JAC from amongst the merit list of the qualified minority candidates.

These candidates can also apply for open merit seats, however it will be the choice of the candidate to avail open merit or reserved seat.

The candidates must be domiciled in NWFP/ FATA.

IDP's Seats:

These seats are only for academic session 2009-10. Admission against these seats will be strictly on merit basis.

The candidates having domicile of the following conflict zones, are eligible

S. #	Name of District	Conflict Zones
1.	Dir Lower	Union Councils chakdara, Tazagram, Asbanr, Haya Serai, Bashigram, Kitkay, Lal Qila, Gall Maidan Zaimdara, Lajbook, Ouch, Khanpur. The following villages of Union Councils Badwan, Chatpat, Adam Dehari, Bakandai, Chakdara, Trai Chakdara, Gadar, Jabba Chakdara. The villages of Union Council Balambat: Safaray, Malakand, Kohairy and Hajiabad.
2.	Dir Upper	Union Council Dog Darra
3.	Buner	Union Councils Koga, Nawagai, Norizi, Roga, Karapa, Pacha Killi, Dewana Baba, Daggar, Gagra, Gokand, Malikpur, Torwarask, Abakhel, Malik Khail, Gadezai, Ellai, Batara, Gulbandai, Pandair, Soray, Shalbandi, Sarwari, Makhrani and Amazai.
4.	Swat	All Union Councils
5.	Shangla	Union Council Alouch, Malik Khel and Martung, Bingalai, Bar Puran, Chowga, Shikawlai, Ismail Khel, Behlol Khel, Nusrat Khel, Chakaisar, Bunerwall, Opal, Sarkool, Alpuri and Dilownai.

B. FEDERAL RESERVE AND QUOTA SEATS:

I. FATA RESERVED SEATS

1. FATA seats include all seats reserved in Medical and Dental Colleges of NWFP and other Provinces. Out of the total reserved seats for FATA,
 - i. 10% seats are reserved for candidates who have obtained their Primary, Middle, SSC (Science) & F.Sc (Premedical Part-I & Part-II) education from institutions within FATA while.
 - ii. 90% seats will be shared between the candidates who have passed SSC, FSC from institutions located both outside and inside FATA.
 - iii. Any candidate who has obtained part of his/her education outside FATA, will not be considered as **inside** candidate
 - iv. In case of non existence of school/college or non availability of the facility for teaching science subjects, the candidate will have to provide a solid proof in the form of a certificate (as per specimen given on page 67) duly verified by the concerned EDO (Education) and countersigned by the concerned PA (Agencies) and DCO (FRs).
 - v. In case a candidate nominated against FATA reserved seat does not avail the facility for which he has been nominated; the Nominating Agency should be informed by him/her immediately, failing which a penalty of debarring for one/two years will be imposed on the defaulter candidate(s) for his/her future selection/ nomination against reserved seats.
2. The candidates applying against FATA reserved seats in NWFP Medical and Dental Colleges as well as elsewhere in Pakistan, shall apply to the Chairperson JAC on prescribed forms as well as submit a photocopy of admission form alongwith attached documents in the FATA Secretariat, NWFP, Peshawar whose concerned authorities will verify the documents especially the **domicile**.

3. The Joint Admission Committee will finalize the merit list of FATA candidates on the basis of *inter se* merit. Selection will be subject to rules established by the SAFRON/ FATA Secretariat NWFP.

The candidates must fulfill the following criteria:

- a. Possess valid FATA domicile certificate.
- b. Have passed the Entrance test for admission to NWFP Medical & Dental Colleges for the current session.
- c. Fulfill all other criteria laid down for admission in NWFP Medical & Dental Colleges.

II. Seats Reserved for AJK & Northern Areas

The AJK & Northern areas seats include all seats reserved in Medical and Dental Colleges of NWFP for candidates from AJK & Northern areas.

The candidates seeking admission from AJK & Northern Areas against the seats reserved in NWFP Medical/Dental College should apply to Secretary Nomination board Muzaffarabad and Director of Education Northern areas, Gilgit respectively.

The candidates must fulfill the following criteria:

- a. Possess Northern areas valid domicile certificate/ AJK valid state subject certificate/ domicile certificate.
- b. The nominated candidates must have qualified the Entrance Test conducted by the Govt of NWFP for admission for the current session and have obtained at least 60% unadjusted marks in their F.Sc. (Pre-Medical) or equivalent examination.
- c. Fulfill all other criteria laid down for admission in NWFP Medical & Dental Colleges.

The selected candidates of AJK/Northern areas must report to the Principal of the concerned Medical/Dental Colleges of NWFP before the closing date of admission.

III. Foreign Quota Seats

- a) Technical Assistance Program Seats
- b) Foreign Self-Finance Seats

a. PAKISTAN TECHNICAL ASSISTANCE PROGRAM SEATS

An applicant will be eligible for the said seats subject to following conditions:

- i. The applicant and his/her father or mother holds a permanent foreign nationality.
- ii. The applicant must have physically studied and passed HSSC/ equivalent (Pre-medical) examination from outside Pakistan during his/her stay abroad, having a certificate from the Institution last attended.)
- iii. The applicant must also fulfill the criteria laid down by Economic Affairs Division, Ministry of Economic Affairs & Statistics, Government of Pakistan Islamabad.
- iv. The applicant should also fulfill the admission criteria of public sector medical/dental colleges of NWFP.

Foreign candidates seeking admission under Technical Assistance Program in NWFP Medical/Dental colleges shall submit their applications through their own Government/Embassy to the Economic Affairs Division Government of Pakistan Islamabad which will make necessary selection and allocation. The names of the selected candidates for MBBS/BDS course under Technical Assistance Program seats will be communicated directly to the concerned college by the Economic Affairs Division, Government of Pakistan, Islamabad with a copy to Secretary Health, Government of NWFP, for endorsement. The candidates must have passed the subjects of Biology, Physics and Chemistry and should have obtained minimum of 60% unadjusted marks in their examination equivalent to HSCC (pre-medical) examination of Pakistani Boards. The final nomination against these seats must reach the concerned medical college before the open merit interviews.

The selected candidates against these seats must reach the concerned college 15 days before the start of classes.

FOREIGN SELF FINANCE SEATS:

The applicant will be eligible for admission on Foreign Self-finance seats if:

- i. He/she holds a permanent foreign nationality and also fulfills the admission criteria laid down by Higher Education Commission, Government of Pakistan, Islamabad.
- ii. He/she should also fulfill the admission criteria of NWFP public sector Medical/Dental colleges, however these candidates are exempt from Entrance Test.

Foreign Candidates seeking admission against foreign Self-Finance seats in NWFP Medical/Dental Colleges shall submit their applications through their own Government/Embassy to the Higher Education Commission Islamabad who will make necessary selection and allocation of seat.

Nomination of the selected candidates for MBBS/BDS course against foreign seats will be communicated to the college concerned directly by Higher Education Commission Islamabad with a copy to Secretary Health, Govt. of NWFP.

The selected candidates against these seats must reach the concerned college at least 15 days from start of classes.

SEATS FOR OVERSEAS PAKISTANIS OF NWFP / FATA DOMICILE (OPF SEATS):

The candidates seeking admission against the seats reserved for children of overseas Pakistanis NWFP Medical & Dental Colleges shall have to apply through the Ministry of Labour, Manpower and Overseas Pakistanis, Government of Pakistan, Islamabad in addition to their direct application to the Chairperson JAC.

- i. The candidate must have domicile of NWFP
- ii. The candidate must have passed the NWFP Medical & Dental Colleges Entrance Test for the current session and have obtained at least 60% unadjusted marks in their F.Sc Pre-Medical or equivalent examination.
- ii. The candidate must have passed the NWFP Medical & Dental Colleges Entrance Test for the current session and have obtained at least 60% unadjusted marks in their F.Sc Pre-Medical or equivalent examination.
- iii. The candidate's Father / Mother must have valid OPF Membership and Foreign Exchange Remittance Card.
- iv. The candidates seeking admission against the reserved seats must fulfill the requirements laid down by the Ministry of Labor and Manpower, Government of Pakistan.

The application should be recommended to the Chairperson JAC through the concerned Ministry. The JAC will finalize the admission on prescribed merit.

The OPF candidates from NWFP and FATA applying for these seats can also apply on general open merit and FATA seats respectively.

AFGHAN NATIONAL SEATS:

An applicant will be eligible for the said seats subject to the recommendation of Economic Affairs Division, Ministry of Economic Affairs & Statistics, Government of Pakistan Islamabad and routed through Higher Education Commission. The candidates must fulfill the admission criteria of NWFP public sector Medical/Dental colleges.

BANGLADESH NATIONALS SEATS:

An applicant will be eligible for Bangladesh National Seats subject to the recommendation of Economic Affairs Division, Ministry of Economic Affairs & Statistics, Government of Pakistan Islamabad. The candidates must fulfill the academic criteria of NWFP public sector Medical/Dental colleges.

Note:

1. If a candidate remains absent at the time of interview for admission, he/she will lose the right of admission in public sector Medical/Dental Colleges of NWFP.
2. Any quota / reserved seat remaining unfilled till one week before the final closing date of admission will be filled through open merit.
3. If at the time of interview, an eligible candidate is not present for any quota/ reserve seat, the seat/seats will be converted to open merit unless a very genuine reason for absence from interview on the due date is presented to the Chairperson JAC at the time or within 24 hours after the date of interview of the candidate, who will have the final authority to decide the case on merit.

QUALIFICATIONS AND OTHER CRITERIA FOR ADMISSION

All the candidates applying for admission in MBBS/ BDS courses in the NWFP public sector Medical/Dental Colleges , Fatima Jinnah Medical College Lahore (for girls only). & other Medical and Dental Colleges outside NWFP (for FATA and reciprocal seats) must fulfil the following requirements

Eligibility Criteria for Candidates

I. Qualifications:

The candidates applying for admission against any category of seats must have passed the F. Sc. (Pre-Medical) examination from a Board of Intermediate and Secondary Education in Pakistan in 1st Division with at least 60% unadjusted marks.

OR

Passed an examination of Foreign University/Board other than Afghanistan (except Afghan National seats) which in scope and standard is found equivalent to the F.Sc (Pre-Medical) examination of Pakistan, subject to the following:

- i. The examination is recognized as equivalent to F.Sc (Pre-Medical) by the Inter Board Committee of Chairmen (IBCC), Islamabad. It shall be the responsibility of the candidates to settle their cases with IBCC and should get clearance certificate from IBCC, Islamabad for recognition of their qualifications.
- ii. The equivalence certificate must be attached with the application form before the final closing date.
- iii. Provisional equivalence certificate issued by the IBCC may be entertained for sitting in the Entrance Test as well as for admission. However, confirmation of candidate's admission will be subject to production of proper equivalence certificate issued by the IBCC.
- iv. The candidate has obtained marks equivalent to unadjusted 60% of F.Sc total marks according to the formula laid down by the IBCC, Islamabad.
- v. The equivalence certificates of such candidates will not be accepted if he/she has not studied and passed the subjects of Physics, Chemistry and Biology in his/her 9th, 10th, 11th and 12th Grade / O & A levels or other equivalent examination recognized by the IBCC. He/she must have passed English as a subject at O or A level.
- vi. Only the Converted Marks Certificates issued by the IBCC will be accepted. The equivalence of marks will be on the basis of a certificate issued by IBCC.

II. Entrance Test and determination of merit.

1. There is an Entrance Test as per the requirement of PM&DC for admission to MBBS/ BDS in Public Sector Medical and Dental Colleges in NWFP. The date, time and venue for Entrance Test will be notified in the national daily newspapers. Any change in schedule of Entrance Test will be notified in press and on the websites of ETEA/KMC and other public sector medical colleges.
2. All candidates who have obtained at least 60% unadjusted marks in their F. Sc. (Pre-medical) examination or equivalent foreign examination, are eligible to sit in the Entrance Test.
3. Entrance Test forms will be available from designated branches of United Bank of Pakistan, NWFP that will be notified in the press with the admission advertisement.
4. The Test will be held in the following subjects of F. Sc. (Pre-Medical):
 - i. Physics
 - ii. Chemistry
 - iii. Biology
 - iv. English (general for language proficiency)
5. The candidate will be issued Entrance test card after submission of the prescribed form by the due date and time along with required documents. If the result is not declared before the last date for submission of Entrance Test form, a certificate from the Head of the Institution last attended to the effect that the student is likely to pass F.Sc. (Pre-Medical) or equivalent examination with at least 60% marks, will be entertained. However, the original certificate will have to be submitted with the application form for admission.
6. All admissions in NWFP Medical & Dental Colleges against Pakistan Technical Assistance Program Seats, and Foreign Self-Financing Seats will be done as per policy approved and notified by Economic Affairs Division and routed through Higher Education Commission, Government of Pakistan, Islamabad.

7. **Weight age for preparation of final merit list will be as under:-**

EXAMINATION / TEST	WEIGHTAGE
SSC or equivalent level examination	10%
Adjusted marks in F.Sc or equivalent examination	50%
Entrance Test	40%

The Entrance Test papers will be of MCQ type and will consists of:

1. Biology 60 Questions
2. Chemistry 60 “
3. Physics 60 “
4. English 20 “

The Entrance Test will be from the entire F. Sc. course in the above-mentioned subjects except for English.

EXAMPLE:

A candidate has obtained marks:

- i. SSC or Equivalent qualification 650/850 or 76.5%
- ii. Adjusted F. Sc. marks or equivalent level marks 870/1100 or 79.1%
- iii. Entrance Test Marks 460/800 or 57.5 %

His/ Her merit will be calculated as follows:

%age mark	Weightage	=	Weightage	=	Factor Marks
a. Weightage for SSC		=	76.5 x 0.1	=	7.65
b. Weight age for F.Sc		=	79.1 x 0.5	=	39.55
c. Weight age for Entrance Test		=	57.5 x 0.4	=	23.00
Merit score of the candidate		=	a+b+c = 7.65+39.55+23.00	=	70.2

Final calculation in percentage will be rounded up to two decimal points.

8. The pass percentage in the entry test will be 40% and any candidate who fails to qualify the entrance test will not be considered for admission for any category of seats except Foreign Nationals, Pakistan Technical Assistance Program and Foreign Self Finance.
9. The result of the test will be valid for the current academic year only. The result of the previous year (s) will not be considered for the subsequent year(s) and the candidate will have to reappear in the entrance test if he/she desires to apply for the current admission session. A candidate can avail only three (3) attempts in the entrance test.
10. The result of the Entrance Test when declared will be displayed on the websites of ETEA and websites/ notice boards of KMC / AMC and other public sector medical/dental colleges. Final merit lists will be displayed on the colleges' notice boards as soon as it is ready.
11. A candidate qualifying the entrance test cannot claim admission against any seat unless he/she fulfils the other criteria specified in this admission policy.

III. AGE

There is no lower or upper age limit for admission in public sector Medical/Dental colleges of NWFP.

Whenever two or more candidates are bracketed equal in the final merit list, the older candidate will be preferred over younger one. In case the tie continues, the one having better marks in Matric shall be considered. If the tie still continues, then the candidate with better marks in entrance test will be given preference.

C. Admission of the candidate will be Cancelled if:

1. It is found at any stage of MBBS/ BDS course that the candidate was not entitled for admission according to the Public Sector Medical/ Dental Colleges NWFP admission policy.
2. The candidate is found medically unfit at any stage of MBBS/BDS course.
3. The candidate fails to report for admission and fails to deposit the fee on due date.
4. Any document, information provided by candidate is found false/fake or fabricated at any stage of MBBS/BDS course.
5. It is found that candidate was not entitled for admission in preference to the other candidates who applied for admission at any stage of MBBS/BDS course.

DOCUMENTS REQUIRED WITH APPLICATION FORM

Applicants must attach with application form attested photocopies of the following certificates and documents.

The documents & certificates must be attested by a gazetted Govt. servant. The stamp of the officer must bear his/her full name, designation and current place of duty. Selected candidates shall have to submit all original certificates at the time of interviews/admission. The original documents of the selected candidates will be retained by the College concerned and will be returned on leaving the Institution. (The application forms and photocopies of the documents submitted by the candidates not selected will not be returned to them).

- i. Two Copies of Detailed Marks Certificate of the examination on the basis of which admission is sought
- ii. An equivalence certificate from the Inter Board Committee of Chairmen, Islamabad, if the qualifying certificate is from an Institute abroad.
- iii. Hafiz-e-Quran certificate from a Registered Madrassa if the candidate claims to be Hafiz-e-Quran.
- iv. Matric / Secondary School pass Certificate (Science / equivalent).
- v. Migration Certificate from the respective board (only from admitted candidates)
- vi. a. Disability registration certificate from social and Welfare Department, Govt. of NWFP
b. Disability medical certificate on prescribed proforma from concerned certified specialist if applying against seats reserved for the disabled.
- vii. Two Copies of Domicile certificate of the candidate. (Domicile certificate submitted with the Entrance test form will not be changed at a later stage of admission process).
- viii. A copy of Domicile certificate of the father of the applicant; if the father is not alive, then the death certificate of the father along with the domicile certificate of the mother have to be submitted.
- ix. A copy of Computerized National Identity Card of the candidate or Computerized Registration Form.
- x. A copy of Computerized National Identity Card of the father of the applicant; if the father is not alive, a copy of the National Identity Card of the mother or guardian.
- xi. A copy of Parent's valid OPF Membership Card and Foreign Exchange Remittance Card (Valid on the closing date of application form for admission) in case of candidates applying against Overseas Pakistani's Seats.
- xii. A copy of Attempt certificate from the concerned BISE if the period between SSC and F.Sc. is more than two academic years.
- xiii. **Original** Undertaking on judicial stamp paper of Rs. 20/- duly attested by Notary Public/ Political Agent as per specimen given in the prospectus/ admission form (only for admitted candidates).
- xiv. Three passport size colored photographs of the applicant attested on the back.
- xv. Certificate of location of educational institutions from principals/ Head Masters of the concerned institutions have to be submitted by the candidates of FATA and backward areas.
- xvi. The certificate must be countersigned by the EDO and DCO of the concerned district and Political Agent of the agency.
- xvii. Certificate from the Institution last attended with duration of stay.
- xviii. In case, the candidate has obtained F.Sc part-I and part-II education from different institutions he/she has to produce a certificate indicating the institution from where F. Sc. Part-1 and Part-II have been obtained.

Warnings

1. If any document / information provided by candidate is found false/fake or fabricated at any stage of MBBS / BDS course, the admission will be cancelled.
2. Incomplete application forms will be rejected.
3. The domicile, DMC of F.Sc. (Pre-Medical)/Equivalent Examination, SSC and other certificates once submitted with the entry test form cannot be changed and shall be considered as final. Revision of result or improvement of marks by the board/IBCC after the finalization of merit list shall not affect the merit list of admission of current year in any way.
4. All the above-mentioned certificates issued after the dates fixed for receipt of application forms shall not be entertained.
5. Application forms with any false statement by the candidate will be rejected.
6. If any certificate submitted by the candidate is found false, or forged during his/her study period, his/her admission shall be cancelled forthwith and he/she shall be blacklisted for admission to any professional colleges in NWFP. Further legal action can be taken against the student under the existing criminal laws.

SCRUTINY COMMITTEE:

The Chairperson Joint Admission Committee, will constitute a scrutiny committee, comprising of representatives from all the public sector medical/ dental colleges which will scrutinize the documents of all candidates.

ADJUSTMENT OF MARKS

The following marks will be added/ deducted from the total marks of F. Sc. obtained by the candidate in order to calculate the adjusted marks. The addition or deduction shall not change the eligibility (60% in F.Sc) of the candidate.

1. Only Ten (10) marks will be deducted for extra attempt availed in F.Sc examination by the candidate to improve marks beyond the period of two years after passing the SSC/ Matric annual or supplementary examination. The original attempt certificate issued by the respective BISE shall be accepted as final proof of improving marks.
2. If the applicant does not submit the attempt certificate, his/her marks will be deducted according to the gap between SSC & F.Sc examinations.
3. Ten percent (10%) weightage shall be given to marks obtained by the candidate in SSC (Science) or equivalent examination according to the percentage of marks obtained in the said examination.
4. If a candidate has not passed his/her SSC (Science) or equivalent examination of Pakistan Boards, he/she will have to produce Matric equivalence certificate from IBCC, Islamabad.
5. Twenty (20) marks will be added to F. Sc. marks of a candidate who is Hafiz-e- Quran on the recommendation of Committee for Hafiz-e-Quran.

COMMITTEE FOR TESTING THE CANDIDATES CLAIM FOR HAFIZ-E-QURAN:

The Chairperson JAC will constitute a four members committee of Senior Teachers and Huffaz-e-Quran. Two of the four members will be Huffaz-e-Quran to be nominated by the Dean faculty of Islamic Studies Peshawar.

This committee will test the validity of the claim of the candidate. The decision of the committee will be by consensus.

APPELLATE COMMITTEE FOR HAFIZ-E-QURAN

If a candidate is not satisfied with the decision of the committee for Hifz-e-Quran, he/she can appeal to the Appellate Committee for Hafiz-e-Quran (within 48 hours) which will be constituted by the Dean Faculty of Islamic Studies, University of Peshawar on the request of the Chairperson JAC.

SELECTION AND ADMISSION OF APPLICANTS

The JAC will consist of the following:

- | | |
|--|-------------|
| 1. Principal, Khyber Medical College, Peshawar | Chairperson |
| 2. Principal, Ayub Medical College, Abbottabad. | Member |
| 3. Principal, Khyber College of Dentistry, Peshawar. | Member |
| 4. Principal, Gomal Medical College, D.I. Khan | Member |
| 5. Principal, Saidu Medical College Swat. | Member |

6.	Principal, Khyber Girls Medical College, Peshawar.	Member
7.	Principal, Bannu Medical College, Bannu.	Member
8.	Principal Bacha Khan Medical College, Mardan	Member

ADMISSION PROCEDURE

1. The Joint Admission Committee shall call applications for admission to MBBS/BDS. The admission/scrutiny committee shall process all valid applications and attached documents.
2. The Chairperson JAC / Principal KMC will display a merit list for each category of candidates. Objection, if any, be submitted in writing to the Chairperson JAC who will be competent to rectify any error or omission FIVE DAYS before the interviews are held. The final merit list will be displayed two days before the start of interviews.
3. The JAC will interview the candidates for selection against open merit, NWFP Backward areas, Special Quota Seats, NWFP Girls seats at FJMC, Lahore, Reciprocal seat at NMC, General Self Finance Seats, FATA seats, and seats for Overseas Pakistani with NWFP domicile.
4. The candidates of the following cadres will be recommended by the respective nominating departments according to the criteria as specified in the admission policy.
 - i. Pakistan Technical Assistance Program
 - ii. Bangladesh National seats
 - iii. Afghan National seats
 - iv. Foreign self finance seats
 - v. AJK seats
 - vi. Northern Areas seats.
 - viii. Special FATA/Balochistan Project seats
5. The JAC will finalize the merit list of FATA candidates on the basis of criteria laid down jointly by the JAC, FATA Secretariat & SAFRAN. Selection will be subject to rules established by the Federal Government/ FATA Secretariat.
6. Representatives of Civil Secretariat FATA and SAFRAN will participate in the deliberation of the JAC when the merit list against FATA Seats is finalized.
7. The final selection of candidate against the reserved seat for FATA in different Colleges in NWFP and other provinces will be notified by the FATA Secretariat/ SAFRAN.
8. Appeal against the decision of JAC for admission on FATA reserved seats can be made to the appellate committee through the FATA Secretariat, Peshawar.
9. Right of appeal against the decision of JAC or any of sub committees in case of process of admission on FATA reserve seats shall vest in the FATA Secretariat.
10. No candidate will be admitted unless he/she has paid the fee and dues. All dues must be paid by the due date, otherwise next candidate on merit will be considered for admission.
11. All admissions will be provisional. All certificates or any other documents submitted with the application form will be subject to verification. Any candidate whose documents are found incorrect or false / forged in any way, or whose authentication is doubtful, will be struck off from the college roll and legal action may be taken under the criminal and civil law against him/her.
12. The Principal can expel a student from the college roll at any time during the course of his/her study if incorrect or wrong data had been submitted by such a candidate/ parent/ guardian at the time of admission.
13. No show cause notice will be necessary for any action under this rule, nor would the Government, the Principal or any other authority be liable for damages for any action taken under this rule.
14. Any cost of litigation accrued by the JAC /college(s) on account of law where the fault of the candidate is proved shall have to be paid by the candidate or his/her parent/guardian.
15. Admission fee and other dues will not be refunded to those students whose admission has been cancelled due to his/her forged documents or rusticated/expelled/removed from the college roll for any reason or he /she willfully discontinues studies.

16. A student who is admitted to the first year MBBS/BDS class of the NWFP Medical & Dental Colleges but is continuously absent from the beginning of the academic session for a period of four weeks without any valid reason shall be struck off from the college roll and his/her seat will be filled on the basis of merit from the waiting list.
17. The Medical Board of the respective medical colleges will examine selected candidates. If a candidate is disqualified medically, he/she will not be admitted.
18. A candidate once admitted in public sector NWFP Medical/Dental College may be allowed to leave for another Medical/Dental College in other province / country provided he/she applies for this purpose before the closing date of admission:
 - Those admitted in previous year(s) will not be allowed to do so.
 - Fee once paid shall not be refunded and any scholarship amount paid shall be recovered in such cases.
 - The undertaking given by the candidate on account of financial penalty should also be enforced.
19. Students already admitted in MBBS OR BDS on provincial seats, are eligible to reappear in the Entry Test if they have resigned/withdrawn their admission and paid the prescribed penalty (Rs. 50,000/- for open merit/ provincial quota seats and Rs. 2,00,000/- for general self finance) **before** appearing in entry test provided:
 - i. The candidate submits a certificate alongwith entrance test form, issued by the Principal of the college, to the effect that he/ she has paid all the previous dues including the penalty.
 - ii. He/she has not been expelled/ debarred from the college under any provision of the Prospectus.
20. The parent(s) or legal guardians must accompany all the candidates at the time of interview.

MIGRATION

Migration from one public sector Medical / Dental college to another in NWFP will be governed by the following rules & regulations.

1. Mutual migration is not allowed.
2. Migration from private to public sector medical college is not allowed.
3. Migration will only be allowed after passing 1st Professional examination.
4. Migration will be allowed only when a vacant seat is available in the total strength of the college as approved by Pakistan Medical & Dental Council.
5. Migration will be allowed only when the vacant seat is available in the corresponding class, over all strength of the college and category of seats in which the student is seeking migration.
6. Migration will be allowed on merit among the applicants.
7. Both the Principals of the concerned medical colleges must give no objection certificate prior to the final approval by the competent authority.
8. While allowing migration, the rules of PMDC must not be violated in any way.
9. The migrating students must clear all the dues of the college where he/she remained for more than 6 months.
10. The migration fee will be Rs. 50,000 for students who will be seeking migration from institutions with in the province.
11. The migration fee will be Rs. 1,00,000/- for students migrating from other provinces and abroad.
12. The fee will be deposited in the college where migration is sought (recipient college).

ANNUAL TUITION FEE SCHEDULE

The fees and subscription given in the prospectus of the NWFP Medical & Dental Colleges for current Session are payable by all the students of Medical and Dental Colleges from 1st year to Final year class irrespective of their year of admission. Following is the Tuition Fee Schedule:

i. Category A (Normal fee paying seats):

- a. Open Merit seats
- b. NWFP Backward areas
- c. FATA Seats in NWFP Medical & Dental colleges

- d. Federal Reserved Seats for AJK/Northern Areas
- e. Seats for the Disabled Students
- f. Minority Seats
- g. Federal Seats for Overseas Pakistanis of NWFP origin
- h. Students under Pakistan Technical Assistance Program and Foreign Nationals.
- i. FATA/Balochistan Project seats.
- j. IDP's seats.
- ii. **Category B (Provincial Self Finance Seats)**
 - i. First Year MBBS/BDS = Rs. 250,000/- per annum
 - ii. Subsequent years = Rs. 200,000/- per annum

Concession of 25% of Fee will be given to the Children of Medical Teachers and employees working/retired from Public Sector Medical/Dental College/PGMI, selected under self finance on merit.

iii. **Category C (Foreign Self Finance Seats):**

- a. For MBBS US-\$: 6,000/- per annum
- b. For BDS US-\$ 6,000/- per annum

Note: Concession in fee that has been extended to children of medical teachers and employees working/ retired from public sector medical & dental colleges/ PGMI admitted on foreign self finance has been withdrawn from session 2008-09. However, this decision will have no retrospective effect.

1. Any student admitted against the General Self-finance seats if fails in a class would have to deposit Rs. 50,000/- for repeat academic year in which he/she fails. Subsequently, after promotion to next higher class he/she will pay the normal self-finance fee.
2. Any student admitted against the Foreign Self-Financing seats etc. if fails in a class will have to deposit a fee of US \$ 1,000/- for repeating the academic year. Subsequently, after promotion to next higher class he/she will pay the normal fee for Foreign Self-Financing Students.
3. Any student who fails/ is detained in a professional examination both in annual and supplementary in any medical/dental subject shall not be promoted to the next higher class. He/she shall undergo the course of studies in the subject(s) in which he/she failed/detained and will be required to complete at least 75% attendance in the same class in which he/she has failed. There will be no provisional promotion in any case.
4. Students must clear all subjects before promotion to the next class.
5. No candidate is allowed under any circumstances to appear in two professional examinations in one academic year.
6. Students who do not clear Part I and Part II of 1st professional examination in four chances each will not be eligible for further medical studies in the country.
7. All students must pay their fees/dues by the date(s) fixed by the Principal of the concerned college. If any student is unable to pay the dues on the due date, he/she must seek the permission of the Principal for extension of the last date of receipt of dues. If the fee is not paid one month after the due date, the defaulters in category A will be fined rupees 30/- per day, and those in category B & C will be fined Rs. 120 per day.
8. If the defaulter fails to clear the dues 60 days after the last due date, the candidates name will be struck off from the college roll.
9. The candidate may appeal to the college authorities for readmission in the same session. The college authorities may allow readmission on compassionate grounds only after payment of Rs. 10,000/- for category a students and Rs. 50,000/- for category B & C students. This will be in addition to the college normal fees and other subscriptions.
10. Fines once levied will not be condoned

COLLEGE ADMINISTRATION

Each college is administered by a Principal who is appointed by Health Department, NWFP. He is helped by Vice Principals, other senior faculty members of the college and the academic council.

The Principal will:

1. Carry out all academic, administrative and financial responsibilities assigned to him by the health department.
2. Represent the College at Institutional Management Council and other necessary forums.
3. Discharges all academic duties entrusted to him and deals with all the matters of academic interest in the Institution at all time.
4. Draw and promulgate the detailed teaching program for students in accordance with the decisions of the Academic Council and Pakistan Medical & Dental Council.
5. Approve the agenda of the meetings of the college academic Council.
6. The Principal/ Vice Principal will sign and issue academic certificates in respect of the students.
7. Preside over the various academic functions of the college.
8. Be responsible for the compilation of all medical education and research data in the institution.
9. Carries out all other duties that may be assigned to him from time to time by the Govt./ Institutional management council.

THE COLLEGE ACADEMIC COUNCIL

- Each College will have an Academic Council which will consist of the whole time Professors & Heads of teaching units.
- The Principal of the College will be the Chairman / Chairperson of the Council.
- The Vice-Principal Academics will be the Member/Secretary of the Council.

The College Academic Council:

- i. will determine the requirements of the Medical and Dental education, evaluation and research in the light of rules and regulations of Pakistan Medical & Dental Council.
- ii. will set standards and targets for Medical and Dental education and research for each department. (The council will try to do the necessary capacity building in each department to achieve the desired targets).
- iii. will lay down policy and procedures for academic and clinical governance and support to students including students' career counseling.
- iv. will facilitate the development of the College learning resources including a rich Library and strong IT support.
- v. will be responsible for maintaining discipline in the college premises.
- vi. will prepare and submit an annual performance report about the college at the end of each academic year.

ACADEMICS

A — COURSE OF STUDIES FOR MBBS STUDENTS

The course of studies for MBBS is five academic years. The duration of the academic session will be 9 months including preparatory holidays and examination.

FIRST YEAR		Hours
1	Anatomy	350 hours
2	Physiology	350 hours
3	Biochemistry	200 hours
4	Islamic & Pakistan Studies	25 hours
5	Behavioural Sciences	25 hours
6	Community Medicine	25 hours
7	Medicine including Psychiatry & Dermatology	33 hours
8	Surgery including Surgery, Orthopaedics, Anaesthesia & Dentistry	32 hours
9	Obstetrics & Gynaecology	10 hours
10	Paediatrics	15 hours
11	Ophthalmology	5 hours
12	E.N.T	5 hours
13	Radiology	5 hours
SECOND YEAR		Hours
1	Anatomy	250 hours
2	Physiology	250 hours
3	Biochemistry	200 hours
4	Islamic & Pakistan Studies	25 hours
5	Behavioural Sciences	25 hours
6	Pathology	90 hours
7	Community Medicine	25 hours
8	Medicine including Psychiatry & Dermatology	70 hours
9	Surgery including, Orthopaedics, Anaesthesia & Dentistry	70 hours
10	Obstetrics & Gynaecology	30 hours
11	Paediatrics	40 hours
12	Ophthalmology	10 hours
13	E.N.T.	10 hours
14	Radiology	10 hours
15	Nuclear Medicine	10 hours
THIRD YEAR MBBS		Hours
1	Pharmacology	300 hours
2	Pathology	240 hours
3	Forensic Medicine	100 hours

Prospectus for NWFP Medical/Dental Colleges 2009-2010

4	Community Medicine	75 hours
5	Medicine including Psychiatry & Dermatology	143 hours
6	Surgery including, Orthopaedics, Anaesthesia & Dentistry	142 hours
7	Obstetrics & Gynaecology	80 hours
8	Paediatrics	75 hours
9	Ophthalmology	25 hours
10	E.N.T	25 hours

FOURTH YEAR MBBS

Hours

1	Pathology	180 hours
2	Community Medicine	85 hours
3	Medicine including Psychiatry and Dermatology	255 hours
4	Ophthalmology (for students admitted in the session 2008-09 and onwards)	70 hours
5	ENT (for students admitted in the session 2008-09 and onwards)	70 hours
6	Surgery including, Orthopaedics, Anaesthesia & Dentistry	275 hours
7	Obstetrics & Gynaecology	140 hours
8	Paediatrics	80 hours
9	Radiology	20 hours
10	Nuclear Medicine	10 hours
11	General Practice	10 hours
12	Clinico-Pathological Conference	60 hours

FINAL YEAR MBBS

Hours

1	Medicine including Psychiatry & Dermatology	385 hours
2	Surgery including, Orthopaedics, Anaesthesia & Dentistry	385 hours
3	Obstetrics & Gynaecology	140 hours
4	Paediatrics	90 hours
5	Radiology	25 hours

Note: There will be at least five lectures in each professional MBBS on Behavioural Sciences and Research and Development.

B — COURSE OF STUDIES FOR BDS STUDENTS

The Bachelor of Dental Surgery (BDS) curriculum is a 4 year course. At the end of the training a dental surgeon should be able to:

- make an accurate oral and dental diagnosis.
- give local anaesthetic.
- perform an operation on the teeth and jaws.
- take a good required X-ray.
- perform dental laboratory techniques.
- deal with medicolegal cases.
- look after the dental health of the community.

Subject	Lecture Hours	Hours
1 Anatomy, Histology.	100	300
2 Physiology & Biochemistry	50	150
3 Dental Materials & Dental Technology	50	200
4 Pakistan Studies	25	—
5 Islamic Studies	25	—
6 Oral & Dental Anatomy, Oral Physiology, Histology & Tooth Morphology	45	100
7 General & Dental Pharmacology Therapeutics	100	60
8 General Pathology & Microbiology	50	150
9 Surgery	60	200
10 Medicine	60	200
11 Oral Medicine	65	100
12 Oral Pathology and Bacteriology	65	100
13 Prosthetics	110	510
a) Pre-clinical Prosthetics (2nd year BDS)	40	260
b) Clinical prosthetics (3rd & 4th year BDS) Complete dentures, Crown and BridgeWork, Oro-facial Prosthetics	70	250
14 Conservative Dentistry	125	695
a) Pre-clinical Operative dentistry	30	260
b) Clinical conservative dentistry	30	45
c) Endodontics	15	100
d) Periodontia	20	100
e) Paedodontics	15	100
f) Community Dentistry	15	30
15 Orthodontia and Radiology	55	160
a) Orthodontia	40	140
b) Radiology	15	20
16 Oral Surgery, Anaesthesia, Dental Forensic Medicine & Toxicology Medical/Dental Ethics & Dental Practice Management (40, 20, 5, 2, 3).	70	330

Note: There will be at least five lectures in each professional BDS on Behavioral Sciences & Research and Development.

EXAMINATIONS

Internal evaluation in 1st, 2nd, 3rd & final professional MBBS and BDS courses is done as per PMDC and KMU Academic Council Rules & Regulations. Comprehensive annual University examinations are held in all subjects in all the professional examinations.

MBBS

FIRST PROFESSIONAL MBBS PART-I EXAMINATION:

- 1) Anatomy
- 2) Physiology
- 3) Biochemistry

FIRST PROFESSIONAL MBBS PART-II EXAMINATION:

- 1) Anatomy
- 2) Physiology
- 3) Biochemistry and
- 4) Islamic and Pakistan studies.

SECOND PROFESSIONAL MBBS:

- 1) Pharmacology
- 2) Forensic Medicine and
- 4) General pathology.

THIRD PROFESSIONAL MBBS:

- 1) Special pathology
- 2) Community Medicine
- 3) Ophthalmology
- 4) ENT.

FINAL PROFESSIONAL MBBS:

- 1) Medicine
 - 2) Surgery
 - 3) Gynae/Obs
 - 4) Paediatrics.
-

BDS

FIRST PROFESSIONAL

- 1 Human Anatomy & Histology
- 2 Physiology & Biochemistry
- 3 Chemistry of Dental Materials & Laboratory Technique

SECOND PROFESSIONAL

- 1 General Pathology & Microbiology
 - 2 Pharmacology including Dental Pharmacology
-

- 3 Oral Anatomy, Histology, Physiology
- 4 Islamiyat and Pakistan Studies (IPS)

THIRD PROFESSIONAL

- 1 Medicine
- 2 Surgery
- 3 Oral Pathology & Bacteriology
- 4 Oral Medicine/ Periodontia

FINAL PROFESSIONAL

- 1 Dental Prosthetics including Crown & Bridge work & Laboratory Procedures.
- 2 Conservative Dentistry including Periodontia, Children Dentistry, Preventive/Community Dentistry.
- 3 Oral Surgery Anaesthesia, Dental Forensic Medicine, Toxicology & Medical Ethics.
Orthodontia & Radiology.

ELIGIBILITY AND RULES FOR EXAMINATION

1. A student shall be eligible to appear in a professional examination if he / she fulfils the following conditions:
 - a. Has passed all the subjects of the previous examination.
 - b. Has undergone the specified period of theoretical and practical courses and clinical training including demonstrations for the said examination to the satisfaction of the department concerned,
 - c. No student is eligible for university examination without having attended at least 75% of lectures, demonstrations, tutorials and practical/clinical work in both *in-patients* and *out-patients* in that academic session.
 - d. Has his / her name submitted to the Controller of Examination KMU by the Principal on clearance by the Head of department / teacher concerned,
 - e. Has paid the requisite fees for the examination to the KMU and has cleared all the college / hostel dues,
2. Any student who fails to clear the 1st Professional MBBS Part-I examination in FOUR chances availed or un-availed after becoming eligible for the examination, shall cease to become eligible for further medical education in Pakistan.
3. Any student who fails to clear the 1st Professional MBBS Part-II examination in FOUR chances availed or un-availed after becoming eligible for the examination, shall cease to become eligible for further medical education in Pakistan,
4. Maximum of FOUR chances availed or un-availed will be allowed to a student to clear First Professional BDS Examination. If a student fails to pass First Professional BDS in stipulated FOUR chances, his / her name will be struck off from the college. He/she will be considered ineligible to undertake BDS studies anywhere in the country,
5. The Principal will not forward the examination form of any student unless he /she produces clearance certificate from the college cashier, hostel warden and the college librarian,
6. A student who fails in part of the 1st Professional part-I and part-II examination and does not avail two consecutive chances will have to clear all the subjects in the subsequent chance. However, there is no bar on the number of chances in second, third and final professional examinations.
7. Each theory and Practical / Oral examination shall be of at least three hours duration.
8. The minimum passing marks in each subject shall be 50% both in theory and practical. A student who fails in theory or practical examination of a subject, shall be considered to have failed in the subject and will have to reappear both in theory and practical.
9. Any student who fails both in annual and supplementary examinations in any subject including part-I and part-II of 1st Professional examination shall not be promoted to the next higher class. He / she shall undergo the course of studies in the subject(s) in which he / she failed. There will be no provisional promotion in such cases.
10. A student who fails in any subject, shall be required to attend the lectures and practical courses regularly with the subsequent class.
11. A student who re-appears in any professional examination shall pay requisite fee for the examination.
12. A student who is eligible to appear in the examination but did not take examination for whatever reason, shall be considered to have failed.
13. Only two examinations, one Annual and one Supplementary are allowed in any one year. No third or extra supplementary examination is permitted.
14. A student who has passed his / her MBBS / BDS examination shall be entitled to the degree of Bachelor of Medicine and Bachelor of Surgery (MBBS) and Bachelor of Dental Surgery (BDS) from the Khyber Medical University provided that he / she has conformed to the requirements of Pakistan Medical & Dental Council in vogue which may be changed from time to time.
15. Preparatory holidays shall be one month for 1st Professional Part-I, Part-II, 2nd and 3rd Professional MBBS / BDS examinations and not more than two months in Final Professional MBBS / BDS examination. The gap between two consecutive papers should not be more than two days.
16. A student who discontinued his / her studies for a period of 5 years or more will not be allowed readmission. If he wants readmission before that period he will be allowed to continue his studies from the class he left. However, the validity of an examination will be 3 years. After 3 years the student has to retake the last professional examination.

EXAMINATIONS FOR MBBS STUDENTS

FORMAT OF EXAMINATION

Theory paper will consist of:

- | | |
|--------------------------|-----|
| a. MCQs | 50% |
| b. Short Essay Questions | 50% |

FIRST PROFESSIONAL MBBS PART-I:

a)	Anatomy and Histology	Credit
	One paper	90 marks
	Internal Evaluation	10 marks
	Oral & Practical	90 marks
	Internal Evaluation	10 marks
	Total	200 marks
b)	Physiology	
	One paper	90 marks
	Internal Evaluation	10 marks
	Oral & Practical	90 marks
	Internal Evaluation	10 marks
	Total	200 marks
c)	Biochemistry	
	One paper	45 marks
	Internal Evaluation	5 marks
	Oral & Practical	45 marks
	Internal Evaluation	5 marks
	Total	100 marks

Any student who fails to clear the 1st professional MBBS Part I examination in four chances availed or un- availed shall cease to become eligible for further medical education in Pakistan. All subjects must be cleared.

FIRST PROFESSIONAL MBBS PART-II EXAMINATION:

a)	Anatomy and Histology	
	One paper	90 marks
	Internal Evaluation	10 marks
	Oral & Practical	90 marks
	Internal Evaluation	10 marks
	Total	200 marks
b)	Physiology	
	One paper	90 marks
	Internal Evaluation	10 marks
	Oral & Practical	90 marks
	Internal Evaluation	10 marks
	Total	200 marks

c) Biochemistry	
One paper	45 marks
Internal Evaluation	5 marks
Oral & Practical	45 marks
Internal Evaluation	5 marks
Total	100 marks
d) Islamiat and Pak. study	100 marks

Any student who fails to clear the 1st Professional MBBS Part-II examination in four chances availed or un-availed after becoming eligible for the examination shall cease to become eligible for further medical education in Pakistan. All subjects must be cleared.

2ND PROFESSIONAL MBBS EXAMINATION

a. Pharmacology & Therapeutics	
Theory	135 marks
Internal Evaluation	15 marks
Oral & Practical	100 marks
Animal experiment	35 marks
Internal Evaluation	15 marks
Total	300 marks
b. Pathology General & Microbiology	
Theory	135 marks
Internal Evaluation	15 marks
Oral & Practical	135 marks
Internal Evaluation	15 marks
Total	300 marks
c. Forensic Medicine	
Theory	90 marks
Internal Evaluation	10 marks
Viva voce	90 marks
Internal Evaluation	10 marks
Total	200 marks

3RD PROFESSIONAL MBBS EXAMINATION

a) Community Medicine	
Theory	135 marks
Internal Evaluation	15 marks
Oral & Practical	110 marks
Internal Evaluation	15 marks
Project	25 marks
Total	300 marks

b)	Special Pathology	
	Theory	135 marks
	Internal Evaluation	15 marks
	Oral & Practical	135 marks
	Internal Evaluation	15 marks
	Total	300 marks
c)	Ear, Nose, Throat (Otorhinolaryngology)	
	Theory	90 marks
	Internal Evaluation	10 marks
	Oral & Practical	90 marks
	Internal Evaluation	10 marks
	Total	200 marks
d)	Ophthalmology	
	Theory	90 marks
	Internal Evaluation	10 marks
	Oral & Practical	90 marks
	Internal Evaluation	10 marks
	Total	200 marks

FINAL PROFESSIONAL MBBS EXAMINATION

a.	Medicine including Psychiatry & Dermatology	
	Theory	
	Paper I	135 marks
	Internal Evaluation	15 marks
	Paper II	135 marks
	Internal Evaluation	15 marks
	Total	300 marks
	Clinical/Practical exam	
	Clinical	240 marks
	OSCE	30 marks
	Internal Evaluation	30 marks
	Total	300 marks
b.	Surgery including Orthopedics & Anesthesia	
	Theory	
	Paper I	135 marks
	Internal Evaluation	15 marks
	Paper II	135 marks
	Internal Evaluation	15 marks
	Total	300 marks

Clinical/Practical exam		
Clinical		240 marks
OSCE		30 marks
Internal Evaluation		30 marks
Total		300 marks
c.	Obstetrics & Gynaecology	
Paper I		90 marks
Internal Evaluation		10 marks
Paper II		90 marks
Internal Evaluation		10 marks
Oral & Practical		180 marks
Internal Evaluation		20 marks
Total		400 marks
d.	Paediatrics	
Theory		90 marks
Internal Evaluation		10 marks
Oral and Practical		90 marks
Internal Evaluation		10 marks
Total		200 marks

BDS EXAMINATIONS

FIRST PROFESSIONAL BDS EXAMINATION (FIRST YEAR)

S.No	Subject	Theory	Practical
1	Human Anatomy	75	75
2	Physiology	75	75
3	Biochemistry	40	35
4	Chemistry of Dental Materials & Laboratory Technique	75	75

Ten marks are reserved for practical work done during first year for which certified accurate records must be kept, 25 marks will be for laboratory examination like mixing of cement, plaster of paris, making clasps, 40 marks will be for Oral examination.

SECOND PROFESSIONAL BDS EXAMINATION

1	General Pathology & Microbiology	75	75
2	Pharmacology including Dental, Pharmacology	75	75
3	Oral Anatomy, Histology Physiology	75	75
4	Community Dentistry	75	75
5	Islamiyat and Pakistan Studies (IPS)	100	

THIRD PROFESSIONAL BDS EXAMINATION

1	Medicine	75	75
2	Surgery	75	75
3	Oral Pathology & Bacteriology	75	75
4	Oral Medicine/Periodontia	75	75

A candidate will also be examined in Oral Prophylaxis carrying 25 marks. This examination will be conducted along with the subject of Oral Medicine/Oral Pathology.

FINAL PROFESSIONAL BDS EXAMINATION

1	Dental Prosthetics including Crown & Bridge work & Laboratory Procedures.	60	140
2	Conservative Dentistry including Periodontia, Children Dentistry.	60	40
3	Oral Surgery Anaesthesia, Dental Forensic Medicine, Toxicology and Medical Ethics including Haquq-ul-Ibad	60	140
4	Orthodontia & Radiology	60	140

In the subject of Conservative Dentistry 40% marks will be reserved for Periodontia, Community Dentistry and Children Dentistry.

FEE AND OTHER SUBSCRIPTIONS

FEES & SUBSCRIPTION FOR MBBS STUDENTS

The following Fee/Dues will be charged from each student irrespective of his/her year of admission. Students admitted against self finance seats will pay tuition fee as given in the admission policy 2009-2010. However, the principal of the college may make adjustments in the student's funds according to the facilities available in the college. In case of shifting of students in 1st year MBBS/BDS in medical/dental colleges, all dues will be refunded to the students being shifted. In case admission of a student in 1st Year MBBS/BDS is cancelled on his /her own request **before the closing date of admission**, he/she should be refunded **all dues except admission fee**.

FEE AND OTHER SUBSCRIPTIONS

1st Year MBBS

Govt. Dues

Admission Fee	3300/-
Tuition Fee	7700/-
Dissection Fee	110/-
Experiment Physiology/Biochemistry	110/-
Microscope Fee	55/-

Students Fund

Caution Money (Refundable)	550/-
Academic Fee	132/-
College Identity Card Fee	55/-
Library Membership	330/-
PMDC Registration Fee	500/-
University Registration Fee	1000/-
Transport Charges	1100/-
Anatomy Fund	55/-
Sports Fee	165/-
College Magazine	660/-
Student's Benevolent Fund	110/-
Correspondence Fee/	440/-
Document Verification Fee	110/-
Literary Society Fund	165/-
Litigation Fee	550/-

Total

Rs. 17197/-

Note: All selected candidates in 1st Year MBBS/BDS in public sector Medical/Dental Colleges shall deposit the litigation fee in KMC at the time of interviews and the remaining dues in their respective colleges within specified period.

2nd Year MBBS

Govt. Dues

Tuition Fee	8800/-
Dissection Fee	110/-

Prospectus for NWFP Medical/Dental Colleges 2009-2010

Physiology/Biochemistry Experiment Fee	110/-
Microscope Fee	60/-

Students Fund

Academic Fee	132/-
Library Membership	330/-
Transport Charges	550/-
Anatomy Fund	55/-
Sports Fee	165/-
College Magazine	660/-
Student's Benevolent Fund	110/-
Correspondence Fee	132/-
Literary Society Fund	165/-
Litigation Fee	550/-

Total	Rs. 11929/-
--------------	--------------------

3rd Year MBBS

Govt. Dues.

Tuition Fee	9900/-
Pharmacy / Pharma Academic Fee	253/-
Bacteriology, Haematology & Pathology Fee	253/-
Hospital Fee	253/-

Students Fund

Postmortem Fee	110/-
Academic Fee	122/-
Library Membership	330/-
Transport Charges	550/-
Sports Fee	165/-
College Magazine	660/-
Student's Benevolent Fund	110/-
Correspondence Fee	132/-
Clinical Card	82/-
Literary Society Fund	132/-
Litigation Fee	220/-

Total	Rs. 13272/-
--------------	--------------------

4th Year MBBS

Govt. Dues

Tuition Fee	11000/-
Community Medicine Fee	253/-

Prospectus for NWFP Medical/Dental Colleges 2009-2010

Pathology Fee	121/-
Hospital Fee	1078/-

Students Fund

Academic Fee	132/-
College Identity Card Fee	55/-
Library Membership	330/-
Transport Charges	550/-
Sports Fee	165/-
College Magazine	660/-
Student's Benevolent Fund	110/-
Correspondence Fee	132/-
Literary Society Fund	132/-

Total **Rs. 14718/-**

Final Year MBBS

Govt. Dues

Tuition Fee	13310/-
Hospital Practice Fee	1078/-

Students Fund

Academic Fee	132/-
Library Membership	330/-
Transport Charges	550/-
Sports Fee	165/-
College Magazine	660/-
Student's Benevolent Fund	110/-
Correspondence Fee	132/-
Literary Society Fund	132/-

Total **Rs. 16599/-**

FOR BDS STUDENTS

1st Professional BDS

Govt. dues

1. Tuition Fee	7700.00
2. Admission Fee	3300.00
3. Dental Material Fee	290.00
4. Dissection Fee	110.00

Students Fund

5. Caution Money (Refundable)	1100.00
6. Correspondence Fee / Documents Verification Fee	220.00

Prospectus for NWFP Medical/Dental Colleges 2009-2010

7.	Library Membership Fee	330.00
8.	P.M.D.C. Registration Fee	110.00
9.	University Registration Fee	220.00
10.	Transport Charges	440.00
11.	Anatomy Fund	55.00
12.	Medical Examination Fee	55.00
13.	Sports Fee	165.00
14.	College Magazine Fee	660.00
15.	Students Benevolent Fund	110.00
16.	Literary Society	110.00
17.	College Identity Card Fee	55.00
18.	Litigation Fee	550.00
19.	Breakage Fee	55.00

Total **Rs. 15635/-**

Second Professional BDS

1.	Tuition Fee	8800.00
2.	Pharmacology Practical Fee	253.00
3.	Pathology & Bacteriology Practical Fee	253.00
4.	Dental Material Fee	385.00

Students Fund

5.	Correspondence Fee	110.00
6.	Library Membership	330.00
7.	Transport Charges	440.00
8.	Anatomy Fund	381.00
9.	Sports Fee	165.00
10.	College Magazine Fee	660.00
11.	Litigation Fee	605.00
12.	Students Benevolent Fund	110.00
13.	Literary Society Fund	110.00
14.	Breakage Fee	110.00

Total Rs. **Rs. 12712/-**

Third Professional BDS

Govt. dues

1.	Tuition Fee	9900.00
2.	Dental Material Fee	308.00
3.	Oral Pathology & Bacteriology Practical Fee	121.00
4.	Dental Hospital Practice Fee	220.00

Students fund

5.	Correspondence Fee	110.00
6.	Hospital Fee	1078.00
7.	Library Membership	330.00
8.	Transport Charges	440.00
9.	Sports Fee	165.00
10.	College Magazine Fee	660.00
11.	Litigation Fee	220.00
12.	Students Benevolent Fund	110.00
13.	Literary Society Fund	110.00
14.	Breakage Fee	110.00

Total **Rs. 13882/-**

Final Professional BDS

Govt. dues

1.	Tuition Fee	11000.00
2.	Dental Hospital Practice Fee	1078.00
3.	Dental Prosthetic Laboratory Fee	424.00
4.	Correspondence Fee	110.00
5.	Library Membership Fee	330.00
6.	Transport Charges Fee	440.00
7.	Sports Fee	165.00
8.	College Magazine Fee	660.00
9.	Litigation Fee	220.00
10.	Students Benevolent Fund	110.00
11.	Literary Society Fund	110.00
12.	Breakage Fee	55.00

Total **Rs. 14702/-**

TUITION FEE FOR FOREIGN SELF FINANCE SEATS

1.	For MBBS	6000 US\$ per year
2.	For BDS	6000 US \$ per year
3.	For repeat year	1000 US \$

RULES REGARDING PAYMENT OF FEES / FINE FOR MBBS / BDS STUDENTS

1. All students must pay their fees/dues by the date(s) fixed by the Principal of the concerned college. If any student is unable to pay the dues on the due date, he/she must seek the permission of the Principal for extension of the last date of payment of the dues. If the fee is not paid one month after the due date, the defaulters in category A will be fined rupees 30/- per day, and those in category B & C will be fined Rs. 120 per day.
 - * Fines once levied will not be condoned.
2. If the defaulter fails to clear the dues 60 days after the last due date, the candidate's name will be struck off from the college roll.

The candidate may appeal to the college authorities for readmission in the same session. The college authorities may allow readmission on compassionate grounds only after payment of Rs. 10,000/- for category A students and Rs. 50,000/- for category B & C students. This will be in addition to the college normal fees and other subscriptions.

 - * Fines once levied will not be returned.
3. The student who is detained or has failed to pass the examination in both Annual/Supplementary shall have to pay prescribed fees and other subscriptions in full for the class in which he/ she has failed.
4. All those students who have passed/failed in supplementary examination must seek their admission/re-admission forthwith just after the declaration of the result of their classes. All those Students who failed to comply with the above rule (3) will not be allowed to attend the classes Or appear in the examination.
5. Fees once paid shall not be refunded including those of migration cases, but in the case of student who is prevented by the illness or other reasons beyond his/her control from attending the college for most of the year for which he/she may be exempted from payment of the whole or part of amount of fee for the year in which such a student re-joins the college. The levy, accounting and disposal of caution money will be at the disposal of the Principal.
6. The name of a student, who has not paid/cleared all the dues of the college, will not be entered in the admission register, nor will he/she be allowed to attend the classes or appear in the examination.
7. If the security deposited is not claimed within a period of 6 months of the date of leaving the college, then it shall not be refundable and will be credited to the benevolent fund maintained by the college for its students.
8. B.D.S. students in each class will purchase their own minor instruments required for their practical/ clinical work. Large equipments like dental chairs, units and other lab machines and materials will be provided by the college.
9. Those students who use the college vehicle for pick and drop, monthly fees will be charged in accordance with the distance from the college. The amount of fee will be decided by the Academic Council from time to time.

SCHOLARSHIPS AND AWARDS FOR MBBS STUDENTS

SCHOLARSHIPS:

- i. MERIT, PATA and FATA SCHOLARSHIP HOLDERS of this Institution are also allowed to avail the opportunity of any other scholarship from non-government source if they deserve. However no student is allowed to take privilege of more than one scholarship at a time from the Government.
- ii. Students who are getting scholarship will not be entitled to receive the scholarship if he/ she continuously remains absent from the college without first obtaining leave of absence from the Principal or fails in the professional exams.
- iii. In case of breach of any discipline, the scholarship will be withheld.

GOLD MEDALS FOR MBBS STUDENTS

- i. One Gold medal is awarded to the Best Graduate of the Year. Best graduate of the year is one who stands first in the aggregate of all the professional MBBS examinations marks, in his/her first attempt.
- ii. One Gold Medal is awarded for standing first in each professional MBBS examination in first attempt.
- iii. One Gold Medal is awarded for standing first in each subject in all Professional Examinations in first attempt.
- iv. One Gold Medal is awarded by the University for best graduate of all Medical Colleges of NWFP.

GOLD MEDALS FOR BDS STUDENTS:

- i. One Gold Medal is awarded to the Best Dental Graduate of the Year. Best Graduate of the Year is one who stands first in the aggregate of all the professional B.D.S. examinations of the University without having any supplementary in any Professional BDS Examination.
- ii. One Gold Medal is awarded for standing first in each professional BDS examination in first attempt.
- iii. One Gold Medal is awarded for standing first in each subject in all Professional Examinations in 1st attempt.
- iv. One Gold Medal is awarded by the University for best graduate of all dental colleges of NWFP.

EXTRA CURRICULAR ACTIVITIES

The students are encouraged to take active part in the extra curricular activities to ensure “Healthy Body, Healthy Mind”. The following societies of the students are allowed in the Medical/Dental Colleges.

1. Literary society
2. Sport society
3. Social Welfare Society
4. Hiking Club

RULES AND REGULATIONS FOR STUDENTS AT COLLEGE

1. When the teacher enters the class-room, the students should stand up as mark of respect and remain as such till they are directed to sit or the teacher takes his/her seat.
2. Every student shall be required to attend at least 75 per cent of the lectures, seminars, tutorials, practical and clinical classes of each subject in each class failing which his/her name shall not be forwarded to the Controller of Examination, of the University for the purpose of appearing in the concerned examination. It applies also to students who are re-admitted after failing in Annual and Supplementary examinations.
3. Repeated absence from lectures, practical, classes, seminars, demonstrations and from hospital wards for four weeks without justification will make a student liable to be expelled from the college.
4. Clinical students (third, fourth and final year) shall be required to do hospital work during the vacation if necessary.
5. The margin of twenty-five per cent of absence in theoretical, lectures, practical classes and demonstrations and in hospital practice is intended to cover absence only on account of sickness or special emergency considered justifiable by the Principal. A written application should be sent to the Principal by the student or his/her parent or guardian, reporting his/her illness or cause of absence.
6. Every student is required to attend punctually at the hours notified for lectures, demonstrations, seminars, tutorial classes, practical and hospital wards.
7. No student is allowed to leave the lecture room, practical class or a hospital ward without the permission of his/her teacher or until the class is dismissed.
8. All irregularities, negligence of duties and breach of discipline and the subsequent action taken are to be brought to the notice of the Principal by the teacher under whom the student is working.
9. The students must wear the prescribed uniform of the college, and white coat while attending laboratories/dissection hall and the hospital.

Female Students: White/Maroon colour shirt, white Shalwar, white Dupatta, Black Shoes white long overall up to knee length.

Male Students: White Shirt, white Shalwar/ Gray Trouser, Black shoes white long overall up to knee length.

10. All the students should keep their Identity Cards on their chest pocket of overall. Duplicate identity card will be issued on payment of Rs. 50/-
11. Every student shall provide himself/herself with all the prescribed text books and other necessary requisites to enable him/her to study profitably.
12. Students are required to observe order and be quite at all times in the college and hospital premises. Students are forbidden to blow whistle, create noise or indulge in any indecent behaviour or activity in the college and hospital premises during or after the working hours.
13. No unauthorized game is to be played in the college or hospital premises at any time.
14. Outsiders are not allowed in the college.
15. Any student breaking or damaging any college or hospital property shall be required to pay the cost of repair or replacement. In case of willful damage he/she shall be punished as Principal may deem fit.
16. Students are forbidden to address any member or person in authority directly. Any communication intended for such higher authority must be submitted through the principal who will forward it if he considers it desirable.
17. Any student desirous of addressing the Principal by letter must do so separately. Joint applications are entirely prohibited and will not receive attention.
18. Any student wishing to make a representation on any subject, has the right of direct access to the Principal at any time during college hours by previous appointment.
19. Parents/Guardians are expected to co-operate with the authorities of the college by prevailing upon their wards not to take any part in anti-institutional activities.
20. All teachers are accessible at any time for the consideration of difficulties and grievances of the students and will always be pleased to hear them and to give them advice.

21. If a student of the college takes part in any political activity or conducts himself/herself in an unbecoming manner or in such manner as would interfere with the professional conduct or academic work of the college, the Principal may take any action he deems proper or bring him before the College Academic Council for proper action.
22. It is desirable for medical students to engage themselves to reasonable extent in wholesome extra curricular activities such as sports and literary pursuits during leisure in order that they may not become too narrowly professional in interest and outlook.
23. No person shall be invited to address a meeting or society in the college premises without prior permission of the Principal. In all cases, the chair shall be occupied by a responsible person approved for the purpose by the Principal. The subject of debate shall be fixed after obtaining the approval of the Principal in advance.
24. No student shall address a Press Conference, nor write to the press on the political or related subject or matters concerned directly with the administration of the College, University or any Government or Educational Institution in Pakistan or abroad. No poster or banners shall be put up without the approval of the Principal.
25. No student in the college shall be permitted to have any connection with a private dispensary or a consulting room to pose or work as a medical practitioner.
26. No society may be set up by the students nor any meeting held in the college premises without the written permission of the Principal.
27. In case of complaint it will be investigated first by the Head of Department concerned. If it is of serious nature it will be forwarded to the Disciplinary Committee for further investigation and their recommendation will be forwarded to the Principal.
28. In dealing with any breach of discipline, infringement of the rules and regulations mentioned in this prospectus, the Principal may decide to order appropriate penalty including apology, verbal and/or written, withdrawal of scholarship, temporary suspension from the college, removal from the hostel, compulsory migration, expulsion from the college and rustication. If rustication from the college is required, the case will be placed before the College Academic Council whose decision will be final and the decision will be conveyed to IMC/Health Department, Government of NWFP and University.
29. In all cases, leave taken will be at students own risk so far as percentage of attendance is concerned. Even a medical certificate will not condone a deficiency in attendance. Sick leave even sanctioned on medical certificate leading to absence in an examination will mean failure in that examination.
30. The name of the student who is absent without leave continuously for a period of four weeks will be struck off from the college roll.
31. Students absenting themselves from college or hospital work shall be liable to a fine imposed by the Principal.
32. Continuous absence by a scholarship holder will be reported to the sanctioning department for the cancellation of scholarship.
33. Every student must realize that the duty of the authorities of the Medical/Dental College is to impart medical education to him/her and conduct College and University examination according to statues as laid down in university ordinances for the various MBBS examination and according to the regulations of the Pakistan Medical & Dental Council and also to maintain discipline and to run the administration of the college. Every student must, therefore, accept unconditionally the ordinance of the University, recommendations of Pakistan Medical & Dental Council and provisions made in this prospectus including any amendment to be made thereafter. All these have been evolved for the purpose of imparting a sound medical/dental education to the students.
34. Students are not permitted to remain in the lecture room except at the prescribed hours of lectures.
35. Students are strictly prohibited to keep fire arms and other weapons in the hostel, college premises or on their person. The possession/use of narcotics is also strictly prohibited. Any one found in possession of or using narcotics or fire arms will be expelled from the hostel immediately. In case of suspicion, any room can be searched without prior notice.
36. All kind of tours should be arranged in vacations /holidays.

THE TUTORIAL SYSTEM

The object of the tutorial group system is to keep the staff and students in touch with one another and to promote mutual well being and understanding. Each tutor is to look personally into all the difficulties of students (individually) and to report to the Principal of the college for opinion and advice, if any.

- i. The college students are divided into tutorial groups, every group being made up of a proportion of students from each class.

- ii. The group tutors will comprise of teachers of the college.
 - iii. Students once placed in a group will remain in that group until he/she leaves the college. Under no circumstances transfer of a student from one group to another will be permitted.
 - iv. The tutor -in-charge of the group will meet the respective group students as occasion arises.
- 37. Students have to be present in time at any specified activity of the college.
 - 38. For leave or absence the student must apply in writing, stating the reason for his/her request. Requests are submitted to the Principal.
 - 39. All sick students should report to the teaching hospital of the concerned college before attending any other clinic. The Doctor's advice etc. has to be submitted to the college office.
 - 40. At the beginning of the College year the students elect a representative who is supposed to speak on behalf of the class, in all matters concerning the student's community. The representative can be asked to represent his/her class to teachers and committee meetings.
 - 41. is not allowed to bring person not belonging to the staff or the students into the training and education departments without previous permission of the Principal.
 - 42. Students have to wear whit coats during practical and clinical work.
 - 43. All students are responsible for the good care and maintenance of machinery and equipment used during training. They will have to pay for the loss or damage. Breakage and losses are to be reported immediately to the teacher.
 - 44. Students should keep the class room/Laboratory/ward clean.
 - 45. Security measures for handling acid etc are to be strictly followed.
 - 46. All accidents, including minor ones have to be reported to the teacher immediately.
 - 47. Absentees would be sent to the principal who may impose fine and take appropriate action.
 - 48. Late comers may be marked absent.
 - 49. Illness leave more than one day would be allowed subject to medical examination and recommendations.
 - 50. The Authority may expel a student at any time if it is not satisfied with his/her health, conduct or character.

1. TIMING

- a) All students must be in the college by 8:00 AM on all working weekdays (Monday-Saturday).
- b) must not be late from the lecture without a valid reason and must attend all teaching and training activity punctually according to the time table.
- c) Students are not allowed to leave the College without a valid reason.

2. VISITORS

Visitors will not be allowed to see students during classes/ practical/ wards etc.

3. CLEANLINESS

Students are responsible for the cleanliness of their own dormitories, classrooms and laboratories.

4. CLOTHING:

- a) All students must wear the authorized uniform during Practical and hospital duty, and on such other official occasions as the administration may designate.
- b) All students must be decently, neatly and cleanly dressed at all times.
- c) Students are not permitted to make any alteration in their uniforms.

5. INTOXICATING DRINKS AND DRUG ABUSE:

No student is allowed to be in possession of any drugs without a valid reason Possession of intoxicating substances of such as alcohol, opium products and other substances of intoxication and poisons is strictly prohibited.

6. NOISE:

Unnecessary noise is not allowed in the college / hospital premises.

7. SMOKING:

Students are not allowed to smoke within the College and Hospital premises.

8. USE OF ABUSIVE LANGUAGE:

No student is allowed to use abusive language at any time.

9. RIOT:

No riots, strikes, boycott and demonstrations are allowed.

10. WEAPONS:

Possession of arms, explosives and other weapons are strictly prohibited.

11. FIGHTING AND ASSAULT:

No fighting and assaults shall be tolerated.

HOSTEL RULES AND REGULATIONS

SHORT TITLE AND COMMENCEMENT:

- i) These regulations shall be called Medical colleges Hostel admission, residence and Financial Rules.
- ii) These shall come into force at once.

DEFINITION

In these regulations, unless the context otherwise requires, the following expressions shall have the meanings assigned to them. These are:-

- a) Hostel means Boys Hostel and Girls Hostel.
- b) Hostel Administration means Chief Provost, Provosts, Assistant provost, Wardens & House keeper of Girls hostel.
- c) Principal means The Principal of the Medical College.
- d) Assistant Provost means staff appointed by the Govt. of NWFP Peshawar.
- e) Warden means any officer or member of the teaching/non teaching Staff, appointed by the Principal.
- f) Boarder means a regular student of the college, allowed under these rules to reside in the hostel.
- g) Employees of the hostel means hostel Superintendent, Clerks, Bearers, Cooks, Sweepers and others persons assigned the duties in the hostels.
- h) 'Hostel Authority' means Authority of the College.
- i) 'Hostel regulations' means regulation enumerated herein after.

STAFF AND THEIR DUTIES

CHIEF PROVOST

- a) The Chief Provost will be a Professor of medical college, appointed by the Principal of the concerned college.
- b) The Chief Provost will be the overall incharge of the hostels.
- c) The Chief Provost shall keep the Principal of the concerned college informed about all matters of importance about the hostels.
- d) The chief provost shall be granted an honorarium of Rs: 5000/month.

PROVOST

- a) Each hostel shall have one provost who is a senior member of teaching staff appointed by the Principal of the college on the recommendation of the Chief Provost of the concerned college.
- b) He will be responsible for the overall supervision of the concerned hostel.
- c) To Chair the meeting of Assistant Provost/Warden and Superintendent/House Keeper of the hostel on the request of Assistant Provost/ Warden of a hostel in case of emergency of any unforeseen happening.
- d) The Provost shall be granted an honorarium of Rs: 3000/month.

ASSISTANT PROVOST

He/she is an officer appointed by Government. of NWFP/IMC/Principal, whose duties include:

- a) Overall supervision of the hostels.
- b) To co-ordinate the activities of all the hostels.
- c) To convene meeting of the Wardens from time to time to discuss matters/problems of students, hostels and to sort out their solutions and to implement all the decisions taken by the authority.
- d) To call a meeting on the request of Warden of the hostel in case of emergencies or any unforeseen happenings.
- e) To intimate to the Chief Provost, all information in respect of matters of importance and shall obtain the sanction for actions proposed and shall consult him on all matters of importance of the hostels.

- f) To indicate quantum of repair/maintenance work with the help of maintenance staff and to intimate cost on annual repair within the hostel, to the Principal for inclusion in the annual maintenance and repair estimates.
- g) To check and approve all kinds of hostel bills.
- h) To authorize expenses to the Warden up to rupees 5000/- In case of excess he will get the approval of the principal.
- i) Supervise Hostel Establishment.
To keep a check on receipts/expenses

WARDEN

- a) The warden shall be directly under the control of the hostel administration that will look after the hostel affairs.
- b) The warden, in all matters requiring approval, attention or advice of the College administration, relating to discipline or change of conditions in the hostel or any deficiency shall inform/report to the Assistant Provost Office.
- c) The warden shall make the admission of the students on the prescribed form and will maintain complete record of the students and to issue hostel leaving certificate to a resident student after clearance.
- d) The Warden in consultation with the Assistant Provost will report all cases of indiscipline or breach of regulations and orders relating to hostel affairs to the Chief Provost.
- e) The Warden shall supervise the activities of washer-man, tuck shop and mess contractors and ensure payment of dues by them to the account branch before 10th of each month.
- f) The Warden will not stay out of hostel during night without prior permission of Assistant Provost or Principal, as the case may be.
- g) The Warden will be responsible for the safety of hostel property for which he/she shall maintain complete record and also maintain accounts record which will be checked annually by the Accounts Officer and by the Physical Verification Committee of the College. He/ She will be held personally responsible for any damage or loss sustained to the hostel Property.

The warden shall be provided rent free accommodation in the hostel and shall be granted an honorarium of Rs: 2000/month.

SUPERINTENDENT/HOUSE KEEPER Is responsible:

- a) To implement the hostel's regulations with the help of Warden, Assistant Provost and Provost.
- b) To report to the warden every month about non-payment of various funds like mess dues, room rent, electricity and gas charges etc payable by each boarder from date of his/her admission. He/ She shall also report to the student affairs section about the non-payment of dues.
- c) To physically verify the presence of students in their allotted rooms and to check and report the stay of outsiders in the hostels to the warden.
- d) To maintain and prepare the list of monthly mess dues of each boarder.
- e) To check the attendance of the staff working in the hostel and to keep their leave record in their personal files.
- f) To maintain the stock register of permanent and consumable items such as crockery, furniture and other articles of the hostel.
- g) To check and report the water, electricity and gas problems of hostels and communicate them to the concerned authorities through warden and provost.
- h) To check the cleanliness inside and outside the hostel premises.
- i) To look after the common room.
- j) To prepare demands as per college rules and to route the demands through hostel administration and main store department of the college.

HOSTEL CLERK Is responsible:

- a) To maintain all sorts of account books, stock register etc.
- b) To help the Superintendent/House Keeper of the hostel and perform all sorts of clerical work.
- c) To perform any other duty assigned by the hostel administration.

HOSTEL SECURITY

Hostel Security staff will keep liaison with Security Officer of the concerned college for all matters concerning to Security.

HOSTEL ADMISSION

- a) Accommodation in the hostels is a privilege and cannot be claimed as a right. Accommodation being limited in the hostels may not be provided to all the applicants.
- b) Only those students, who are on the roll of the Medical/Dental College, may be allowed admission in the hostel.
- c) Accommodation in the hostels is to be provided on merit cum seniority basis.
- d) Students having accommodation (personal, or official) within a radius of 20 kilometers of the district where the college is located will not be eligible for hostel accommodation.
- e) Students seeking hostel accommodation are required to apply on the prescribed hostel admission form. Students shall submit duly completed forms along with three passport size photos affixed on the hostel admission form and a copy of the DMC of the last exam passed. The forms after necessary scrutiny will then be forwarded to the office of the assistant provost.
- f) The assistant provost will prepare a merit list of the applicants after necessary scrutiny of the admission forms. Allotment of hostel rooms will then be done by the hostel admission committee. Handing over/possession may take time depending upon the time required to complete the process of shifting by ex-room holders.
- g) Students will not be allowed to stay in hostel once they appear in the final Professional MBBS /BDS examination. However, the failed students who will appear in the supplementary examination may formally request for allotment of seat in hostel; the seat may be allotted subject to availability of accommodation and on payment of extra hostel dues and other charges as per rules.
- h) The Provost has the right to refuse admission in the hostel to a student whose past record in the hostel is not satisfactory.
- i) A student who gets admission in the hostel shall occupy his/her room within 7 days. A student who fails to turn up within this period will forfeit his right of admission.
- j) Foreign students of 1st year, 2nd year and 3rd year will be accommodated in bi-seater rooms. Cubicle rooms will be allotted to only 4th year and final year students subject to availability.
- k) Cubicle rooms will be allotted to fourth and final year students only, subject to availability.
- l) Students of 1st, 2nd and 3rd years will be accommodated in seater rooms subject to availability.
- m) Students are required to deposit hostel dues in advance at the beginning of each session/, failed students are also required to deposit hostel dues in advance.

HOSTEL DISCIPLINARY COMMITTEE

Hostel disciplinary committee will comprise of:

- a) Chief Provost
- b) Provost
- c) Assistant Provost
- d) Security Officer of the college
- e) Wardens

This committee will be responsible for

- a) Carrying out enquiry in disciplinary cases in the hostels.
- b) The hostel discipline committee will decide the cases according to hostel conduct and discipline regulations.
- c) The hostel discipline committee may forward the cases needing severe penalties (such as imposition of a fine of more than Rs: 10,000 and or expulsion/ rustication from the college) to the college disciplinary committee.
- d) Any other matter dealing with law and order in the hostels.

HOSTEL REGULATIONS

- a) No student will be allowed to change the room once allotted to him/her except with prior permission of the warden.
- b) No student will be allowed to keep extra furniture of the hostel.
- c) No student will be allowed to change hostel except with permission of the chief provost.
- d) Resident students may be allowed to leave the hostel but only after payment of all outstanding dues.
- e) Private food arrangement within the rooms is not allowed. No resident will overstay beyond authorized period of academic session. In case of overstay of final year student, he/she will have to pay full proportional hostel charges such as electricity, room rent, gas charges and other hostel charges etc.
- f) Resident students are not allowed to use heaters, air coolers and air conditioners in their rooms. Any violation will lead to imposition of fine, recovery of charges incurred and confiscation of the forbidden item.
- g) Resident students are not allowed to participate in any political activity.
- h) Resident students are not allowed to invite any political figure, scholar or any individual for any speech, lecture or sermon.
- i) Entry of females into boys' hostels and vice versa, is strictly prohibited.
- j) Resident students cannot entertain their guests for a night stay without the prior permission of the Warden. The Warden may allow the guests of a Resident to stay for a maximum of two days. However no underage guest is allowed to stay in the hostel. Any violation would make the student liable to disciplinary action.
- k) Resident students are not allowed to keep any valuables, arms, intoxicants, drugs, rods or daggers, and harmful materials etc in the hostel. Any violation of this rule will result in serious disciplinary proceedings and may lead to imposition of heavy fines and expulsion from the hostel.

REGULATIONS FOR HOSTEL DISCIPLINE COMMITTEE

1.	Violation of hostel rules or disobeying the orders of the hostel administration.	First time a fine of up to Rs: 1000/-
2.	Keeping non- residents without prior permission.	First time a fine of up to Rs: 1000/- Second time a fine of up to Rs; 3000/- Third time expulsion from the hostel.
3.	Keeping arms, explosives, intoxicants, drugs or any thing alike.	Fine up to a maximum of 10,000 and/ or expulsion from the hostel.
4.	Indulgence or participation in political, regional, ethnic, caste or sectarian based activities.	Fine up to a maximum of Rs; 10,000 and or expulsion from the hostel.
5.	Causing disturbance in the hostel by playing loud music, using fire crackers or by any other means.	Fine up to a maximum of Rs: 5000/-
6.	Playing games in the hostel corridors or lawns.	Fine up to a maximum of Rs: 1000/-
7.	Sleeping in the prayer hall, common room or study room.	Fine up to a maximum of Rs; 1000/-
8.	Misbehavior with hostel staff, hostel administration or other fellow students.	Fine up to a maximum of Rs; 1000/-
9.	Pasting posters/notices, wall chalking etc. without prior permission of the hostel warden.	Fine up to a maximum of Rs: 5000/- and or expulsion from the hostel.
10.	Damage/theft or misuse of hostel property.	Recovery of loss and Fine up to a maximum of Rs; 5000/- and or expulsion from the hostel.
11.	Subletting of the hostel seat or room to outsiders.	Expulsion from the hostel and a fine of Rs: 10,000/-
12.	Willful absence from the hostel disciplinary committee meeting by a student.	For the first time a fine of Rs: 1000/- For the second time a fine Rs; 5000/- Subsequently expulsion from the hostel.

HOSTEL DUES

Hostel dues can be changed by the college authorities from time to time. Hostel dues for the year 2009-2010 (till further orders) are as following:

Govt dues		
S. No.	Particulars	Charges
1)	Hostel admission fees	Rs. 300/a
2)	Room rent	Rs. 360/a
3)	Service charges	Rs. 200/a
4)	Electricity charges	Rs. 1400/a
Hostel Dues		
1)	Contingency charges	Rs. 240/a
2)	Common room charges	Rs. 180/a
3)	Furniture charges	Rs. 180/a
4)	Sanitary charges	Rs. 180/a
5)	Electricity repair charges	Rs. 240/a
6)	Mess charges	As per actual expenses.
7)	Hostel security	Rs. 200/a
8)	Sui gas charges	As per consumption.

DISCIPLINE

Every student and the parent/guardian of the students at the time of admission into the college shall give the following undertaking:-

UNDERTAKING/AGREEMENT

(To be filled by the candidate on Judicial Bond of Rs. 20/- and duly attested by the Political Agent/First Class Magistrate).

1. Mr./Miss _____ Son/Daughter of _____

resident of _____

do hereby solemnly undertake to abide by the following:-

- i) That I have read the Admission policy for NWFP Medical/Dental Colleges and Prospectus of medical/ dental colleges and hereby agree to conform to all provisions of the statutes of the college or statues and rules as may hereafter be framed by the appropriate authorities.
- ii) That the information furnished in, and documents attached with the application form are correct, and I fully understand that at any time during course of study, if it is found that any information is incorrect or any documents produced at the time of admission are false, which would have rendered me ineligible for admission under the rules, my name shall immediately be struck off from the college roll and legal proceedings started against me.
- iii) That I shall, in case my name is struck off under clause (ii) above not be entitled to claim refund of any fee paid by me. In addition I shall pay to the Principal as liquidated damages @ Rs. 100,000 (One Hundred Thousand) per year of my studies in NWFP Medical/Dental Colleges.
- iv) That I shall have minimum attendance of 75%, diligently apply myself to acquire and develop the skill necessary for the practice and advancement of my study in order to qualify for the examination and will not be promoted to the next higher class unless cleared all the subjects.
- v) That I shall maintain identity as a student of College by wearing college uniform. I shall participate fully and whole-heartedly in games and cocurricular activities.
- vi) The hostel accommodation/Government jobs will be provided subject to availability, in case of non-availability of government jobs/hostel accommodation I will not ask for any job/accommodation.
- vii) That I will not indulge in politics of any type and will not be a member of any political party/ organisation/ student federation and holding a gathering, meeting or taking out procession in any part of Campus, I understand that my failure to observe this clause of undertaking shall result in cancellation of my admission/expulsion from the college, and that the decision of the Principal in this regard will not be challenged in any Court of Law except the Supreme Court of Pakistan.
- viii) That I shall never use violence, threat of violence and pressure in any dispute with others, all means and methods shall only be logic, persuasion, petition, appeal, revision, review and other legal peaceful methods for settlement of differences and disputes.
- ix) That in any disputes with me, teachers and employees of the College I shall accept the decision of the committee constituted by the Principal/Government for settlement of the wrong doers.
- x) Further, I do hereby solemnly undertake to refrain from:-
 - a) Doing anything, which may cause injury or insult to head, teacher, officers and staff of the Institution.
 - b) Holding a gathering, meeting or taking out procession in any part of Campus other than those areas specified for the purpose.
 - c) Allowing or abetting the entry to the premises of the College of expelled students, anti-social elements or others whose presence in the Campus could cause conflict amongst the students.
 - d) Bringing into the Campus, consuming or encouraging consumption of alcoholic products, drugs, and narcotics and indulging in acts of moral turpitude.
 - e) Bringing or keeping any type of weapons within the University/College Premises.
 - f) Using or occupying any room or part of any building of the Institution without Lawful authority.

- g) Subletting my hostel room to unauthorised persons.
- h) Damaging any University/College property including building, equipment, vehicles etc. in any manner.
- i) Indulging in any violence or any other unsuitable activities even outside the campus of Medical/Dental Colleges which may bring bad name of the college.
- j) From all such acts and deeds as might bring disgrace and bad name to the college.
- xi) In case I am reported to be guilty/involved in any of the aforesaid activities during my stay in medical college, the college authority can rusticate me from the college temporarily or expel me permanently I will not try to create law and order situation or instigate the students of the college or of any other institution against the action taken by the college and neither I will go to any Court of Law. In case of my expulsion from the college I shall pay to the Principal as liquidated damages at the rate of Rs. 100,000 (One Lac) per year of my study in the college.
- xii) If it is reported that I have not honoured the decision of the College authorities as described above, I shall be liable to pay Rs. 200,000 (Two Lac) per year of my study in the college as damages to the Government of NWFP.
- xiii) In case there is any dispute between me on one hand and administration of the Medical College on the other hand regarding my involvement in the disciplinary or political matter or regarding the imposition on any penalty or damages on me, the matter shall be referred to the Principal, as the sole arbitrator and his decision in such capacity shall be final and shall not be called in question in any court of law.
- xiv) That I will abide by the decision of the College Authorities in case I am found guilty of indiscipline, defamation, disrespect of the Teachers/ staff and other anti-institutional activities.
- xv) I understand that **If it is found that I was not entitled for admission according to the NWFP Medical & Dental colleges admission policy at any stage of MBBS/BDS course OR if it is found that I was not entitled for admission in preference to the other candidates who applied for admission at any stage of MBBS/BDS course, my admission will stand cancelled.**
- xvi) I solemnly declare that I do not have Double Domicile Certificate.

(Signature of the student)

Full Name _____

Father's Name _____

Nat. Identity Card No. _____

Permanent Address _____

Dated _____ 2009.

TO BE FILLED BY FATHER/GUARDIAN OF THE CANDIDATE

I _____ son/daughter/wife of _____ and Mother/Father/Guardian of _____ hereby fully endorse the undertaking given by my son/daughter/ward and assure that he/she will abide by this undertaking during his/her stay in the College.

i) I also make myself liable to pay Rs. 1,00,000 (one Lac) per year of his/her study in the college in case of any breach of the above mentioned undertaking by my son/daughter/ward, Mr./ Miss _____.

ii) I _____ Father/Mother/Guardian of Mr./Miss _____ assure that my son/daughter/ward will not indulge in politics of any type and will not be a member of any political party/ organization/ students Federation nor will he/she attend any meeting which may result into his/her expulsion from the college, and that the decision of the Principal in this regard will be final.

Witness-1 _____

Signature

Deponent

Signature of the Father/Guardian of the student

Name _____

Full Name _____

Father's Name _____

Father's Name _____

Nat. Identity Card No. _____

Nat. Identity Card No. _____

Present Address _____

Present Address _____

Permanent Address _____

Permanent Address _____

Witness-2 _____

(Signature)

Name _____

Father's Name _____

Nat. Identity Card No. _____

Present Address _____

Permanent Address _____

ATTESTED

Signature and Stamp of
Political Agent/First Class Magistrate

AFFIDAVIT FOR GUARDIANSHIP

(TO BE PRODUCED ON STAMP PAPER)

I _____ Son/Daughter/Wife of _____ hereby solemnly declare that my father has died
in year _____ and _____ is my guardian.

(Signature of Guardian)

(Signature of the applicant)

Name of Guardian _____

Name of Candidate _____

N.I.C. No. of Guardian _____

N.I.C. No. of candidate _____

AUTHORITY LETTER

I Mr./Miss _____ S/D/O _____ hereby authorize

Mr./Miss _____ N.I.C. No. _____ to deposit my application form for Admission for the Session 2009-2010. My as well as his/her specimen signatures are given below:-

Name of Depositor _____

Signature of Depositor _____

Signature of candidate _____

ATTESTED BY

Gazetted Officer

DISABILITY CERTIFICATE

It is certified that Mr./Miss _____ S/D/o _____ is suffering from _____ . It is certified that his/her disability is a **permanent** condition. It is further certified that his/ her disability puts him/ her at disadvantage as compared to a normal person for acquiring education before entering Medical/ Dental College, but otherwise he/she is **capable of performing his/her duties satisfactorily** as a Medical Practitioner. It is further certified that his/ her disability is **not of such a severe degree** that makes him/her unable to acquire medical education or work as doctor. Moreover I certify that at present he/she is **mentally fit and physically able** to carry on studies and perform professional duties after qualifying MBBS/BDS.

(Full Signature)

(To be signed by certified specialist in the relevant field in the Govt. hospitals).

Name of the Consultant _____

Designation _____

Specialty _____

Qualification _____

Present Place of Posting _____

Official Stamp bearing name, Designation and Place of Duty

Date _____

CERTIFICATE OF LOCATION OF EDUCATIONAL INSTITUTES

(To be submitted by the candidates applying against Backward Areas and FATA inner seats)

Office of Executive District Officer (Education) District/Agency/FR: _____

certified that Mr./Ms. _____

S/o, D/o _____ has been

studying in the District/Agency/FR of _____ as follows:

Class	Full Name of School/College	Year (From-To)	Board
Primary (1-5)			
Middle (6-8)			
Matric (9-10)			
F.Sc Part-I (11)			
F.Sc Part-II (12)			

Signature of EDO (Education)
with official stamp

Verified by the DCO of concerned District/FR or PA of Agency

DCO/PA: _____
With official stamp